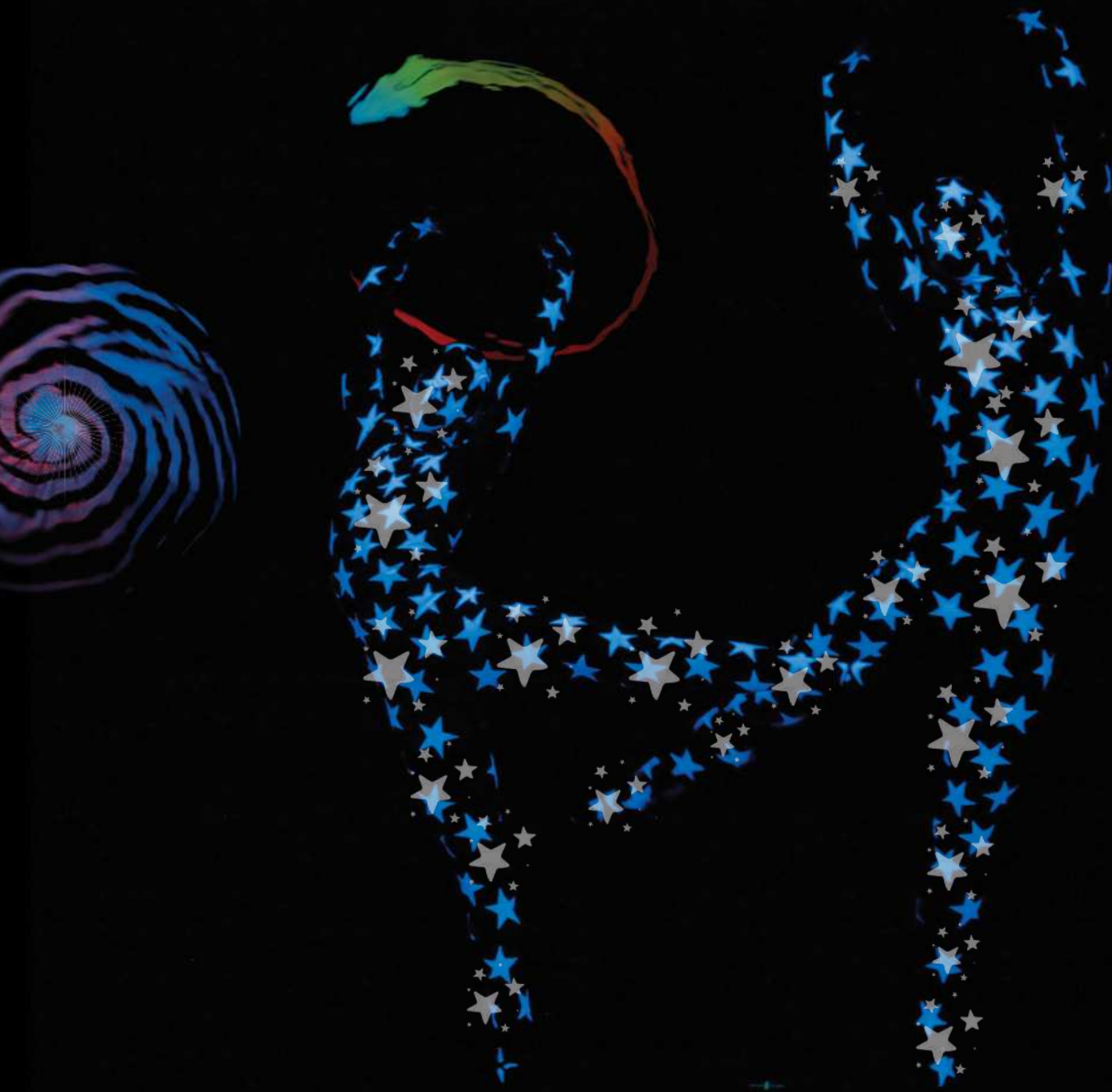




Not Afraid of the Dark
The Show that Glows!®



OCT. 7-8 & 14-15 | AUSTINVENTURES STUDIO THEATER

 BALLETAUSTIN
TWO

 EN FACE
BALLET COLLECTION

TICKETS \$15–\$125

BALLETAUSTIN.ORG

512.476.2163



THE NUTCRACKER

The 61st Annual Production

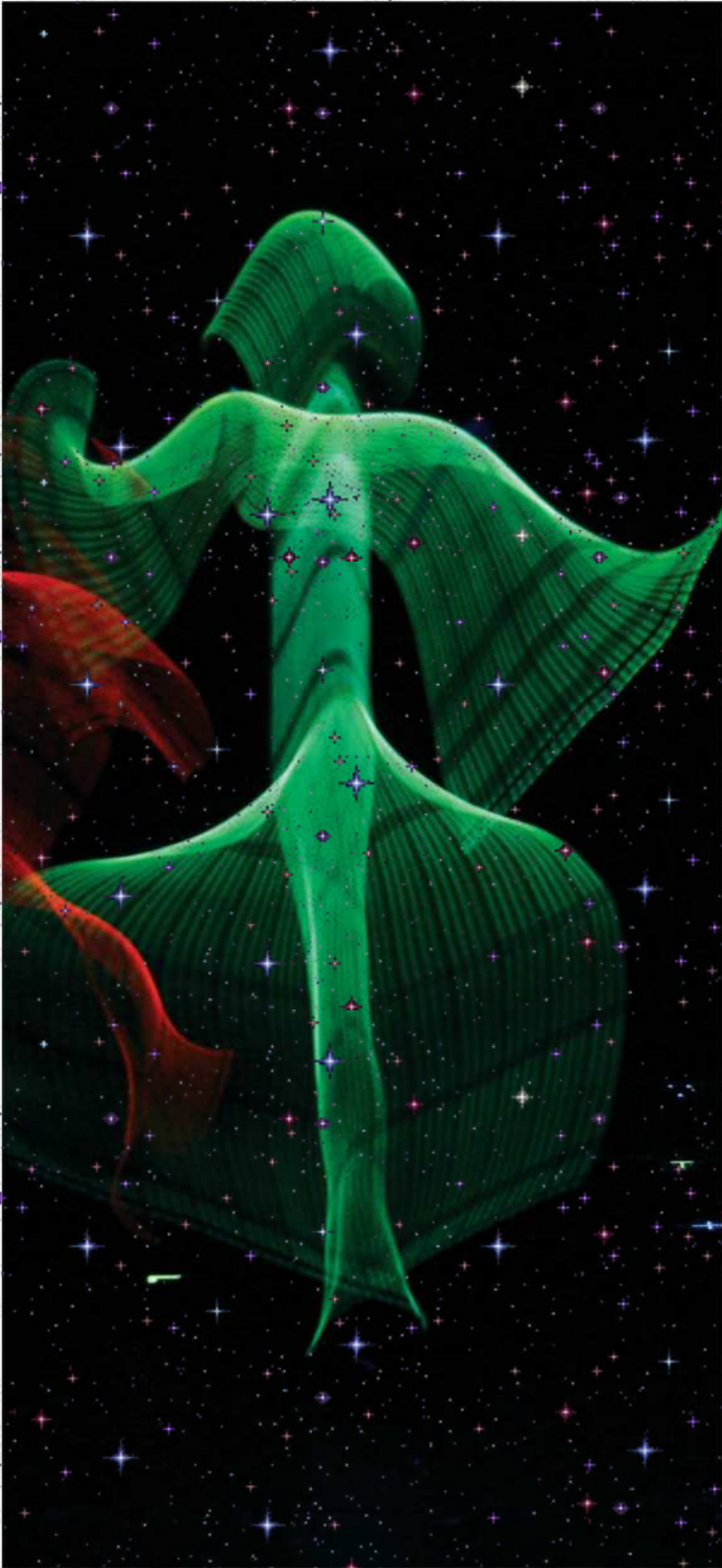
Choreography by **STEPHEN MILLS**
DECEMBER 2 - 23 | THE LONG CENTER

PYOTR ILYICH TCHAIKOVSKY
Music

AUSTIN SYMPHONY ORCHESTRA
Live Accompaniment



CONTENTS



5
A Note from the
Associate Artistic Director

6
Ballet Austin Guild

8
Artistic Team

11
Cast

12
Music &
*Not Afraid of the Dark -
The Show that Glows!®*

13
Ballet Austin TWO +
Butler Fellowship Program

14
Dancers

18
Board of Directors

19
Sponsors

20
Donors

23
Ballet Austin Foundation

24
Staff



DANCERS *GROW HERE*

ENROLL TODAY!

AGES 18 MONTHS TO 18 YEARS



BALLETAUSTIN.ORG/ACADEMY | REGISTRAR: 512.501.8703

It gives me such great joy to bring *Not Afraid of the Dark – The Show that Glows!*® back to our Austin Ventures Studio Theater and the greater Austin community. It's hard to believe that it has been more than two decades since nationally-renowned singer/songwriter Joe Scruggs sat with me, a black light, and two small dolls decorated in livewire in a dark closet at Ballet Austin. Over the subsequent 20 minutes, he shared his marvelous vision of pairing his songs with dance to engage young children in the magical possibilities that can be discovered in the dark. And engage they did! Joe Scruggs' thoughtfully-crafted musical story and Stephen Mills' whimsical choreography (along with 50 glow-in-the-dark props!) have captivated children and their families since its premiere in September of 2001. To date, *Not Afraid of the Dark – The Show that Glows!*® has been seen by nearly 60,000 audience members in Austin and through touring performances across Texas and Arkansas. For many families, this production has become a multi-generational tradition and, in fact, Joe Scruggs and I both have children who grew up watching this show and will likewise share this delightful experience with their own kids. Thank you for being here to share this special nighttime journey with your own families. You are in for a truly enchanting adventure!



MICHELLE MARTIN

Associate Artistic Director



MICHELLE MARTIN

Michelle Martin had her early dance training at the Alberta Ballet School and danced professionally with the Alberta Ballet Company, Indianapolis Ballet Theatre, Hartford Ballet and Ballet Austin. During her tenure with these companies she performed soloist and principal roles in a range of classical, contemporary and modern works. Martin's teaching credits include guest teaching engagements in Canada and across the nation, as well as five years on the faculty of Jordan College at Butler University in Indianapolis. Martin began her tenure with Ballet Austin in 1991 as a dancer with the Company and in 1992 she was appointed ballet mistress and curriculum director of the Academy. In 1999 she founded Ballet Austin TWO, Ballet Austin's apprentice program, followed by the Trainee Program (now the Butler Fellowship Program) in 2000. In addition to her work in the rehearsal studio, Martin supervises the curriculum and faculty of Ballet Austin Academy, designs arts education and audience engagement programs and writes grants. She has served on the Texas Commission on the Arts peer panels for Arts Education, and Music and Dance and has been a juror for the American Ballet Competition for the past nine years. Martin was the 2001 recipient of the Austin-Under-40 award for contributions in the area of Arts and Entertainment.

BALLET AUSTIN GUILD

Ballet Austin Guild is a volunteer group with a mission to support and promote Ballet Austin in its commitment to excellence in dance through fundraising, community, and education.

Ballet Austin Guild volunteers enjoy a deeper level of connection and involvement with Ballet Austin, making the dream of dance a reality for the wider Austin community.

BALLET AUSTIN GUILD OFFICERS

PRESIDENT

Thea Whalen

PARLIMENTARIAN

Lori Keller

TREASURER

Lori Keller

VICE PRESIDENT OF MEMBER EVENTS

Lorrie Garcia

VICE PRESIDENT OF MERCHANDISING

Suzanne Tomlin

VICE PRESIDENT OF MEMBERSHIP

Araceli Tapia

SECRETARY

Blair Thayer

VICE PRESIDENT OF COMMUNICATIONS

Ann Downing

VICE PRESIDENT OF BALLET AUSTIN SUPPORT

Brooke Howard

JOIN THE GUILD TODAY!

Membership benefits include meetings with fellow Guild members, ticket discounts and the opportunity to interact with company dancers.



SCAN FOR MORE
INFORMATION

b a BALLETAUSTIN
GUILD

EN FACE^{MAGAZINE} BALLET COLLECTION

(ahn 'fahss) Position of the body in which the dancer is facing directly towards the audience.



Scan the QR code above to read this magazine on your phone.

PUBLISHER + FOUNDER

Misty Tompoles

ASSOCIATE PUBLISHER

Katrina Ketchum

OPERATIONS DIRECTOR

Annabella Showerman

PROJECT MANAGERS

Chris Porras

Elsbeth Sweatman

ADVERTISING ACCOUNT EXECUTIVES

Heidi Bressler

John Constantino

Lyle Laver

ART DIRECTOR

Heidi Rush

DESIGNERS

Michael Bellinger

Bonnie Dickerson

Jane Sanders

CONTENT MANAGERS

Thomas Baker

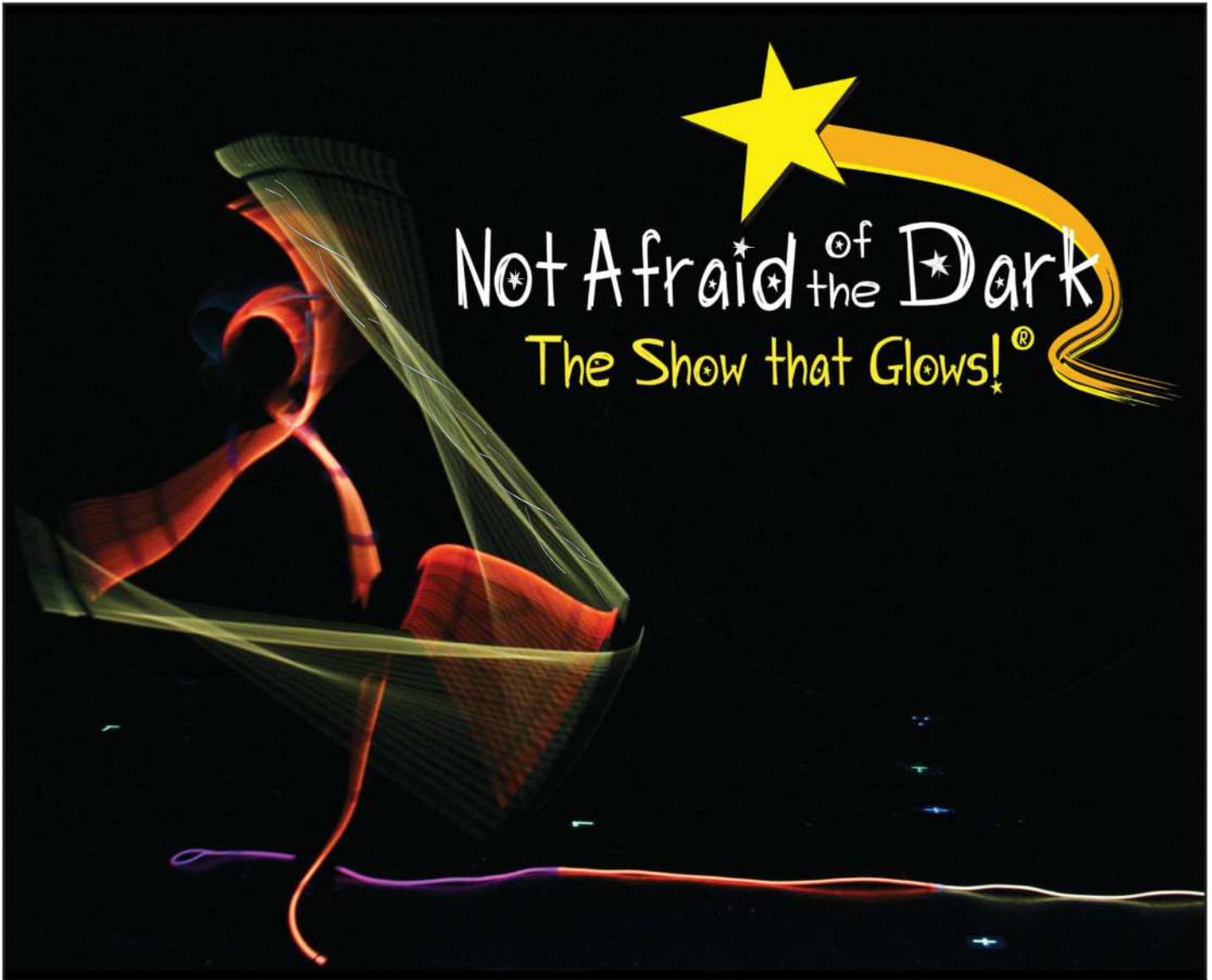
Alanna Love

SUBSCRIBE ONLINE



Call to Advertise: 503.922.2110

Published by Rampant Creative, Inc.
©2023 Rampant Creative, Inc.
All rights reserved. This magazine or any portion thereof may not be reproduced or used in any manner whatsoever without the expressed written permission of the publisher.
Rampant Creative, Inc./En Face Magazine



**NOT AFRAID OF THE DARK
THE SHOW THAT GLOWS!®**

Concept & Music Joe Scruggs
Choreography by Stephen Mills
Staged by Alexa Capareda

**All Songs arranged, produced, and
orchestrated by** Gary Powell
Scenic, Costume, and Puppet Design by David Gaddy
Original Lighting Design by Toni Tucci
Additional Scenic and Lighting Design by Bill Sheffield
Production Stage Manager Steven Myers
Stage Manager Brad Wilson
Costumes Built and Constructed by
Alexey Korygin and Emily Cawood

PRODUCTION SPONSORS

ENDOWMENT SUPPORT THROUGH
THE BALLET AUSTIN FOUNDATION

NOT AFRAID OF THE DARK - THE SHOW THAT GLOWS!®
IS ENDOWED IN BY EMILY MORELAND/MORELAND PROPERTIES

BALLET AUSTIN TWO IS ENDOWED BY SARAH & ERNEST
BUTLER THROUGH THE BALLET AUSTIN FOUNDATION.

THE ARTISTIC TEAM



STEPHEN MILLS

*Sarah & Ernest Butler
Family Fund,
Artistic Director*

Known for his innovative and collaborative choreographic projects, Stephen Mills has works in the repertoires of companies across the United States and around the world. From his inaugural season as artistic director in 2000, Mills attracted attention from around the United States with his world-premiere production of *Hamlet*, hailed by *Dance Magazine* as "...sleek and sophisticated." The Washington Post recognized Ballet Austin as "one of the nation's best kept ballet secrets" in 2004 after Ballet Austin performed Mills' world premiere of *The Taming of the Shrew*, commissioned by and performed at the John F. Kennedy Center for the Performing Arts in Washington, D.C. The Company was first invited to perform at the Kennedy Center in January of 2002 with Mills' production of *A Midsummer Night's Dream* and later presented a variety of works at The Joyce Theater (NYC) in 2005. In 2005 after two years of extensive research, Mills led a community-wide human rights collaboration that culminated in the world premiere work *Light / The Holocaust & Humanity Project (LIGHT)*. In 2006 *LIGHT* was awarded the Audrey & Raymond Maislin Humanitarian Award by the Anti-Defamation League. In September of 2013, the work made its international debut with a tour in three cities across Israel. In October 2016, Mills led his company of dancers through a 16-city tour of the People's Republic of China, which included performances in China's largest city, Shanghai.



COOKIE G. RUIZ, C.F.R.E.

Executive Director

Cookie Gregory Ruiz has more than 30 years of experience in the areas of strategic planning, organizational development and non-profit fund-raising/management. Since 2002, she has held the professional designation of Certified Fund Raising Executive (C.F.R.E.) by the Association of Fundraising Professionals. Her community

honors include Austin Business Journal's "Profiles in Power" Award, Leadership Austin's Polly Scallorn Community Trustee Award, Austin Community Foundation's Beverly S. Sheffield Award for Excellence as a Nonprofit Executive, The American Red Cross' "Clara Barton Medal of Honor," Volunteer of the Year award for the Austin Independent School District, the Lone Star Girl Scout Council "Women of Distinction" Award, The Junior League of Austin's Volunteer Extraordinaire Award, and she was a 2016 Austin Arts Hall of Fame inductee. Ruiz served as the city-wide Chair of CreateAustin, was a City Council appointee to Imagine Austin's Citizen's Advisory Task Force, and is a graduate of the Austin's City Works Academy. As a graduate of Leadership Austin, she served four years on its Board of Directors. Ruiz is currently a member of the Board of Texans for the Arts, a member of the national Board of Directors of the Performing Arts Alliance, the Board of Directors of Housing Works Austin, and is a Fellow of The National Arts Strategies International Chief Executive Program. Ruiz serves as a speaker, facilitator and presenter for a variety of leadership conferences, including the National Conference on Community Leadership, the National Performing Arts Conference, American for the Arts Annual Convention, National Conference of Dance/USA, The Governor's Women's Business Leadership Forum and the Texas Commission on the Arts. In 1996 Ruiz joined the staff of Ballet Austin as Development Director, became General Manager in 1997 and Executive Director in 1999.



BILL SHEFFIELD

*Director of Production
/ Stage Manager*

Bill Sheffield's long tenure with Ballet Austin extends back to the 1980s when he served as the first director of production for the organization. In 1990 Sheffield became the full time Production Manager of the historic Paramount Theatre. Sheffield rejoined the company as production stage manager in 2002 and added the duties as director of production in 2006. An Austin native, Sheffield also produced some of the summer musicals at Zilker Park, including the hits *Seven Brides for Seven Brothers*,

Annie Get Your Gun, *Into the Woods*, and the award-winners *Crazy for You* and *Big River*. Sheffield formerly worked with the Austin Musical Theater, where he was stage manager for many of their productions. He has worked with many Austin arts groups, serving as stage manager, lighting designer or master electrician. Some of these groups include Austin Opera, Bruce Wood Dance, Dance Salad, Conspire, Roy Lozano Ballet Folklorico, Zilker Theatre Productions, Austin Shakespeare Festival, Slavin-Nadal Dance, Austin Dance Ensemble, Austin Repertory Theatre, and Tapestry. More recently, Sheffield helped found the Production Managers Affinity Group with Dance USA serving as its chair for two years.



TONY TUCCI

Lighting Designer

Tucci has been resident lighting designer for Ballet Austin's repertory, for 34 years, lighting designer/director for Ben Stevenson's Texas Ballet Theater and Bruce Wood Dance. Recently designed Flemming Flindt's *Phaedra* Ballet for the Mariinsky Theatre in Vladivostok Russia. Tucci created the lighting designs for Bernstein's *Mass* at the Long Center in June 2018. In September 2018, Tucci designed a new production of *Cinderella*, choreographed by Ben Stevenson for the National Ballet of China. Tucci and has created designs for national and international dance companies: Washington Ballet, Houston Dance Salad, Pittsburgh Ballet Theatre, Colorado Ballet, Cincinnati Ballet, Ballet West, Cirque Ziva-Golden Dragon Acrobats, Royal Danish Ballet, Winnipeg and Swedish Ballets, Hong Kong Ballet, Singapore Dance Theatre, Ballet Contemporaneo de Caracas, Christopher Bruce's Kingdom- Geneva Ballet, Flemming Flindt's *Caroline Mathilde* and *Lucifer's Daughter*-Royal Danish Ballet. Tucci has designed for musical theater, including Austin productions of *Damn Yankees*, *Carousel*, *West Side Story*, *Annie*, *Gypsy*, *Jesus Christ Superstar*, *Music Man*, *Oklahoma*, *A Chorus Line*, *Carousel* and *Sound of Music* as well as Charles Duggan's productions of *Dames at Sea* in *San Francisco* and at the Goodspeed

THE ARTISTIC TEAM

Opera House. For 1996 Summer Olympics, Tucci designed for the Cultural Olympiad, showcasing national and international companies. He is the recipient of two Iden Payne Awards and Critics Table awards for lighting in Austin



ALEXIA CAPAREDA

*Rehearsal Director -
Ballet Austin TWO
and Butler Fellowship
Program*

Alexia Capareda received her early training in classical ballet and modern dance at the Philippine High School for the Arts in her native Philippines. After moving to Texas, she trained professionally at Ballet Austin. She continued her studies in Canada at Ecole Superieure de Ballet Contemporain de Montreal before joining Mario Radacovsky's Ballet Bratislava in Slovakia, where she had the privilege of performing Jiri Kylian's *Falling Angels* and *Six Dances*. She began exploring her own choreography before leaving Europe, winning 3rd prize at the 2013 Festival of Choreographic Miniatures in Serbia. Capareda joined Ballet Austin's artistic staff and Academy faculty in 2015. As Rehearsal Director for Ballet Austin II and the Butler Fellows, she has restaged ballets by Stephen Mills, Nelly van Bommel, Nick Kepley, Thang Dao, and Jimmy Orrange for Ballet Austin II, and has created original pieces for BAII and the Butler Fellowship Program. *Maria and the Mouse Deer*, her new ballet for BAII based on Philippine folk stories, has been awarded a Grants for Arts Projects award from the National Endowment for the Arts. Capareda is an artist and Assistant Director with Jennifer Hart's Performa/Dance. She has co-produced and performed with Frank Wo/Men Collective and has worked with ARCOS, BLiPSWiTCH, Jennifer Sherburn, and Magdalena Jarkowiec. She has collaborated with sound artists/musicians Steve Parker, Brent Baldwin, Henna Chou, Lynn Lane, Austin Camerata, LOLA Austin, and visual artists Tom Suhler and Susan Scafati. She has presented work at Austin Dance Festival, Barnstorm Dance Festival, and Fusebox Festival. In 2017, Capareda received an Austin Critics Table Award for Excellence as a Dancer. She has a B.A. in English and a minor in Theater and Dance from UT Austin.



ALEXEY KORYGIN

Wardrobe Director

Alexey Korygin was born in Donetsk City, Ukraine. He earned a Master's Degree in Fine Arts from the Kiev State Ballet School of the Ukraine, and following his graduation in 1984, he danced with Donetsk State Academic Opera and Ballet Theater as a soloist and toured extensively throughout the USSR, Europe and United States. In 1992 after auditioning in New York, Korygin joined and danced for four seasons with Ballet Austin. At the same time, he began designing and building costumes for the company. In 1996, Korygin finished his dancing career and assumed the position of Ballet Austin's wardrobe master. His costumes can be seen in Stephen Mills' *My Wall of Names and Bolero*, as well as Lambros Lambrou's *Remembrances, Lady of the Camellias, Evolution of An Angel: Part II, Homecoming and Ulysses*. He is also credited for his costumes in Ballet Austin's production of *Fokine's Les Sylphides, Balanchine's Pas de Dix, the pas de deux from Le Corsaire*, and the principal costumes for Ballet Austin's *Swan Lake* production. In 1996, Ballet Austin unveiled a new production of *The Nutcracker* with costumes designed by Tommy Bourgeois; Korygin masterfully constructed 40 of the new costumes, while also building all of the costumes for *Not Afraid of the Dark—The Show that Glows!* in 2001. Additionally, Korygin has served as resident costume designer and co-designer for Ballet Austin's New American Talent / Dance competition and has designed and co-designed costumes for 32 full-length and one-act ballets, while supervising costume construction and wardrobe operations for more than 100 Ballet Austin productions.



MIRIAM JURGENSEN

*Ballet Austin TWO
Head of Wardrobe*

Miriam Jurgensen rejoined the Ballet Austin staff in the fall of 2019. She previously worked for the company as a stitcher and dresser from 2013-2016. She is a native

Austinite with a Bachelor of Arts degree in Theater Arts Technology and Graphic Design from St. Edward's University and a Masters of Fine Arts in Costume Technology from the University of Illinois at Urbana-Champaign. She has also completed the Costume Intensive Course at the Northern College of Costume in York, England. Most recently, Miriam has worked as a draper for the Krannert Center for the Performing Arts in Urbana, Ill., and Hope Summer Repertory Theatre in Holland, Mich. In 2015 and 2017, she was the costume shop manager at the Summer Repertory Theatre Festival in Santa Rosa, Calif. Miriam's favorite credits include craftsperson for Illinois Theatre's *The Minotaur*, draper, and craftsperson for Illinois Theatre's *A Funny Thing Happened on the Way to the Forum*, draper for *The Wiz* at Hope Summer Repertory Theatre, and shop manager for *South Pacific, Tartuffe, West Side Story, Chicago*, and *The Drowsy Chaperone* at the Summer Repertory Theatre Festival.



STEVEN MYERS

Technical Director

Steven Myers joined Ballet Austin in 2010 and works with Ballet Austin's main company as well as Ballet Austin II and the Butler Fellowship program participants for their performances. Myers travels with Ballet Austin II and the Butler Fellows for numerous educational outreach performances, bringing the arts to area schools. In addition, Myers also works with many local performing arts organizations, such as Kathy Dunn Hamrick, Cheryl Chaddick, and SoCo Women's Chorus and serves as the resident lighting designer for Performa/Dance. Prior to joining Ballet Austin, Myers spent 12 years as the production stage manager for the Aspen Santa Fe Ballet. While in Aspen, he toured the world as well as theaters both big and small. Highlights included tours of Israel, Italy, Greece, and France, as well as working with notable choreographers, such as Jorma Elo, Nicolo Fonte, Cayetano Soto, Helen Pickett, Twyla Tharp, David Parsons, Moses Pendleton, and Trey McIntyre.

THE ARTISTIC TEAM

CONTINUED



JOE SCRUGGS

Concept & Music

Joe Scruggs' musical background can be traced to his childhood days and his involvement with the Methodist Church Choir. He was heavily influenced by the folk singers of the Sixties and enjoyed playing his guitar whenever possible. In the 1980s, Joe began writing family-oriented songs to help his wife with her work in her kindergarten classroom. Her stories of the children's concerns and activities—as well as the contributions of their own children—ensured that Joe would never be at a loss for material. Joe's music has earned four prestigious Parent's Choice Awards. His two videos are also both award winners. Joe Scruggs in Concert was chosen as a winner of a 1993 Notable Children's Video Award from the American Library Association. He performed as the Celebrity Mother Ginger in Ballet Austin's 1999 & 2000 productions of *The Nutcracker*. Whether Joe Scruggs addresses our fear of the dark, our ability to think up imaginative excuses, or our enjoyment of the simple things in life, his words and music will always find a responsive home within our hearts.



PETE MARKHAM

*President, Shadow
Play Records*

Mr. Markham graduated from the University of Texas with a degree in Journalism. He then moved to Los Angeles, and for nine years worked in advertising and promotion. Markham returned to Texas in 1983, and has been president of Shadow Play Records & Video since its inception. Pete and Joe Scruggs are co-owners of this record label and music publishing company. Pete is responsible for label and artist promotion, concert touring, and distribution. Markham has, along with Scruggs, been the executive producer of two video releases and nine albums including the music for *Not Afraid of the Dark - The Show that Glows!*®. Pete Markham is a founding member of the American Academy of Children's

Entertainment. He received a Cable Ace Award for his involvement with (and his appearance in) Discovery Communications presentation of the music video, *Bahamas Pajamas* by Joe Scruggs. Markham also performs in the national touring show *Live from Deep in the Jungle, Joe Scruggs in Concert*. Together, Markham and Scruggs have entertained hundreds of thousands of children and parents all over the United States and Canada since 1986.



GARY POWELL

*Musical Producer
& Arranger*

Gary Powell's accomplishments read like a Who's Who catalog of children's music. His list of credits includes scoring work and songs represented on Walt Disney's storybook and song albums of *The Little Mermaid*, *Aladdin*, *Beauty and the Beast*, *The Lion King*, *Pocahontas*, *Toy Story*, *A Bug's Life*, *Toy Story II* and *Dinosaur*. In Powell's work with Walt Disney Records, five of his productions have gone Gold and one Platinum. He has also produced the entire catalog of albums and videos for Joe Scruggs. In 1999, Powell won a Grammy Nomination for his production of Disney's "A Bug's Life Sing Along". In 2001 Gary Powell was awarded the "Award of Distinction" from both the Communicator Awards and Videographer Awards for his video production of "Gary Powell Presents..." a behind-the-scenes look at the recording sessions for "A Bug's Life Sing Along". Powell has won five Gold Parents' Choice Awards and one Silver for his work as producer for Joe Scruggs. Joe's first video, another Powell production, won the National Parenting Publication Award, is a California Video Award winner and has been honored at the USA Film Festival. Powell's production of Joe Scruggs' song *Bahamas Pajamas* won the 1996 Cable Ace Award for "Best Original Song". Mr. Powell can be found on the web at www.garypowell.com.

Photo by Anne Marie Bloodgood





NOT AFRAID OF THE DARK - THE SHOW THAT GLOWS!®

Fireflies *Karis Wu / **Katriel Hwang,
*Alexandra Owens / **Amelia Bednar

Bubbles *Karis Wu / **Katriel Hwang, *Katelyn Hagel /
**Celena Fornell, Jackson Rankin, *Reagan Arenz /
**Isabelle Lapierre, Jordan Lovelace, *Christina Cole /
**Angelina Carbonaro

Gingerbread Man *Karis Wu / **Katriel Hwang, *Katelyn Hagel /
**Celena Fornell, Jackson Rankin, *Caroline Darnell /
**Nya Mitchell

Nightlight *Karis Wu / **Katriel Hwang, *Katelyn Hagel /
**Celena Fornell

Under Your Bed *Karis Wu / **Katriel Hwang, *Katelyn Hagel /
**Celena Fornell, *Alexandra Owens / **Amelia Bednar, Julius Taiber

Falling Asleep *Anika Crouser / **Alayna Hamade,
*Christina Cole / **Angelina Carbonaro, *Caroline Darnell /
**Nya Mitchell

Late Last Night Ensemble

Moon & Stars *Anika Crouser / **Alayna Hamade, Julius Taiber

I Can Dance *Alexandra Owens / **Amelia Bednar,
*Christina Cole / **Angelina Carbonaro, Jordan Lovelace,
Jackson Rankin

Popcorn *Reagan Arenz / **Isabelle Lapierre, *Caroline Darnell /
**Nya Mitchell

Stickman Jorden Majeau, Julius Taiber, *Anika Crouser /
**Alayna Hamade

Rainbow-Colored Jump Rope Ensemble

Conga Line Ensemble

*Performs Oct 8 & 14 / ** Performs Oct 7 & 15

Photo by Anne Marie Bloodgood

NOT AFRAID OF THE DARK - THE SHOW THAT GLOWS!®

Concept and Music

Recorded at Powell Studio Production
and Austin Recording Studio

Executive Producers for all Music

Pete Markham and Joe Scruggs

Guest Vocalist

Hudson Mueller: "I Can Dance"
Bethani (Beth Ullman): "Moon and Stars"

Guest Soloists

Paul Baker, Soprano Sax: "Moon and Stars"
Gary Slechta, Trumpet Rise: "Conga Line"

Voiceover Talent

Jon Kurlylowicz - *Shadow Dancer*
Alexis Menendez - *Child*
Casey Scruggs - *Shadow Dancer*
Joe Scruggs - *Main Narrator*
Linda Scruggs - *Mom*
Patrick Scruggs - *Shadow Dancer*
Derrian Tolden - *Singing Telegram,*
Second Narrator
Kami Townsend - *Fairy of the Subconscious*

Musicians & Vocalists

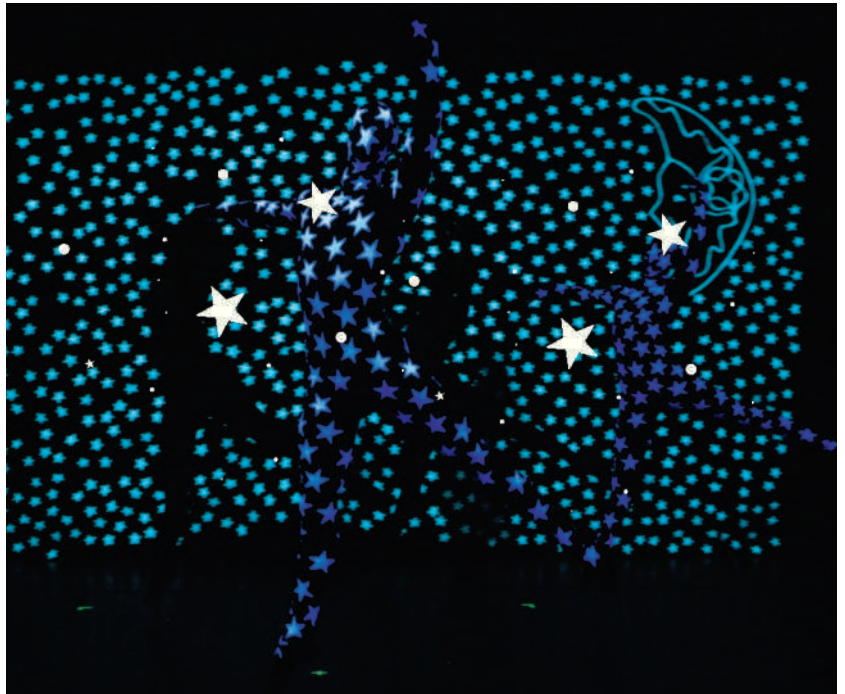
Chester Baldwin, Paul Baker,
Laura Benedict, Beth Blackerby,
Craig Boudreaux, Jennifer Bourianoff,
Carlos Eddie Cantu, Helen Darling,
Wallace Depue, Marc Erck, Mandy Kaye,
Richard Kilmer, Derick Larkin,
James T. Fenner Jr., Daniel Fulmer,
Brain Green, Tom Hale, Pamela Hart,
Jeff Helmer, Hank Hemsath, Billy Henry,
Robin Huston, Ladonna Jones, Alicia Jones,
Richard Kilmer, Mark Lang, Pete Markham,
Chris Martin, Pam Miller, Abby Paulson,
DeeAnne Paulson, Becky Penberthy,
Gary Powell, Ray Ramos,
Jeanne Rogers, Jeanie Runion,
Russell Scanlon, Rebecca Schoolar,
Linda Scruggs, Gary Slechta, Tracy Seeger,
Greg Self, Larry Seyer, Spencer Starnes,
Shannon Swindle, Suzi Stern, J.R. Taylor,
John Treanor, Beth Ullman, David Vik,
John White, Bruce Williams, Kenny Williams,
Patty Wonder, Stephen Wray, Chris Wright

Music Mixed by

Gary Powell and J.R. Taylor

Production Assistant

J.R. Taylor



A child's fear of the dark is perhaps one of the most universal of childhood emotions. Shadows on the wall and discarded clothing on the floor become terrifying monsters, disappearing only with the appearance of dawn's first light. Who among us hasn't leapt across the bedroom, making sure that our feet don't touch the floor until we're safely outside the reach of the "snakes" and "alligators" lying in wait under the bed?

In *Not Afraid of the Dark-The Show that Glows!®*, we take a journey into a marvelous "glow-in-the-dark" world, a world where turning off the lights isn't scary at all- it's funny, it's exciting, it's fantastic! As we follow a young child through their nighttime ritual of bath time, bedtime and beyond, we discover that there really are lots of wonderful things that can happen when you turn out the lights.

Not Afraid of the Dark-The Show that Glows!® is the result of a 2 and a half year collaboration between Ballet Austin, artistic director and choreographer, Stephen Mills and nationally-known children's entertainer, Joe Scruggs. For many years Joe Scruggs has incorporated several "in the dark" songs into his children's programs and has recognized the often intense fear that this elicits in some of his younger patrons. Using an array of special lighting effects and dancing stickmen, *Not Afraid of the Dark-The Show that Glows!®* seeks to dispel that fear and leave children (and adults too!) with a lasting impression of the beauty and magic that can only happen when you turn out the lights.

Joe Scruggs designed many of the lighting special effect. He frequently tried out these ideas on his own little boy. For example, he created "Stickman" after attaching glow-in-the-dark sticks to his son! Joe built models of all his ideas, and then the dancers experimented with these ideas in the dark to discover which worked best.

The lighting for this production includes black lights and fluorescent paints to create special, glow-in-the-dark effects. The lighting, combined with the dancers' movements, creates the effect of stars on the night sky and shoes walking across the stage and ceiling.

Photo by Anne Marie Bloodgood

BALLET AUSTIN TWO + BUTLER FELLOWSHIP PROGRAM

Ballet Austin TWO and the Butler Fellowship Program are endowed by Sarah & Ernest Butler through the Ballet Austin Foundation

BALLETAUSTIN TWO



Ballet Austin TWO, established in 1999, is Ballet Austin's second company, with dancers also serving as apprentices to the main company. Ballet Austin TWO dancers are selected through a nationwide audition process and make Austin their home to participate in this unique training opportunity. With over 40 performances per season, they dance with the main company for larger productions and present their own extensive roster of work in Austin and on tour across the state.

Dancers range in age from 18-23 and are employed for a 32-week season. They are contracted with Ballet Austin TWO for up to two years, during which time they receive artistic guidance, career management counseling, and job placement assistance. To date, more than 200 graduates of Ballet Austin TWO and the Butler Fellowship Program have secured contracts with professional dance companies, and represent more than half of Ballet Austin's current main company.

BALLETAUSTIN BUTLER FELLOWSHIP PROGRAM



The Butler Fellowship Program serves as Ballet Austin's trainee program. All Butler Fellowship positions are fully endowed, allowing up to 15 outstanding dancers the opportunity to train at Ballet Austin tuition-free. Currently, 6 of Ballet Austin's main and second company contracts are filled with graduates of the Butler Fellowship Program.

Designed for post-high school dancers, the Butler Fellowship Program features an innovative and personal approach to professional-track training. It is linked directly to the artistic "arc" of Ballet Austin, with all daily technique classes taught by Artistic Director Stephen Mills, Associate Artistic Director Michelle Martin, and Rehearsal Directors Christopher Swaim and Alexa Capareda.

Recruited through a nationwide audition process, Butler Fellows participate in up to 25 hours of training per week. Additionally, they present their own repertory performances each spring and perform with Ballet Austin TWO and the main company in larger productions.

Photos by Anne Marie Bloodgood

DANCERS

Ballet Austin TWO



CHRISTINA COLE

Joined Ballet Austin TWO in 2023

Originally from Bloomfield Hills, Michigan, Christina began her training at 7 years old with Mary Geiger. In 2018, she was accepted into Boston Ballet School's Professional Division under Margaret Tracey where she was a recipient of the Bruce Marks scholarship. She performed as Clara in Mikko Nissinen's *The Nutcracker*, and in school productions of Bournonville's *Le Conservatoire* and excerpts from *Copellia*. In 2022, she joined Pacific Northwest Ballet's Professional Division under Peter Boal, performing in Balanchine's *The Nutcracker*, *A Midsummer Night's Dream*, and *Serenade*. She has also attended numerous summer intensives on scholarship, including Boston Ballet School, the School of American Ballet, Complexions, and Pacific Northwest Ballet.



ANIKA CROUSER

Joined Ballet Austin TWO in 2023

Originally from Columbus, Ohio, Anika received her early training from Dublin Dance Center and Columbus City Ballet. She supplemented her training with several summer intensive programs including Chautauqua Institution, Pacific Northwest Ballet, Houston Ballet, Cincinnati Ballet, and BalletMet. She graduated from Southern Methodist University in 2023, where she received a BFA in Dance Performance and a BA in Creative Advertising. At SMU, her notable performance experience includes George Balanchine's *Tchaikovsky Pas de Deux*, Silas Farley's *Meadows Serenade*, Martha Graham's *Diversion of Angels*, and Adam Houghland's *Less*.



CELENA FORNELL

Joined Ballet Austin TWO in 2023

Celena Fornell is from Seattle, Washington. She trained at Pacific Northwest Ballet School on full scholarship and at Boston Ballet School. While at PNB, Celena has performed in many company productions, including Balanchine's *The Nutcracker* and *A Midsummer Night's Dream*, Crystal Pite's *The Seasons' Canon*, Kent Stowell's *Swan Lake* and *Carmina Burana*, Petipa's *Giselle*, as well as the title role of Snow White in Bruce Wells' *Snow White*. She was also a participant of the Student Exchange between PNB and The National Ballet of Canada in 2022.



ISABELLE LAPIERRE

Joined Ballet Austin TWO in 2023

Isabelle began her dance training in Columbus, OH, with BalletMet. At age 14, she was invited to the School of American Ballet in New York City and performed in SAB's Lecture-Demonstrations and with the New York City Ballet in their 2022 Spring Gala. She spent a post-graduate year with Miami City Ballet School performing in their company's productions of Cranko's *Romeo and Juliet*, Balanchine's *The Nutcracker*, and *Symphony In Three Movements*. Her summer training included the Paris Opera Ballet, Académie Princesse Grace Monaco, American Ballet Theatre, and Royal Danish Ballet. Isabelle is also pursuing an undergraduate degree in clinical psychology.

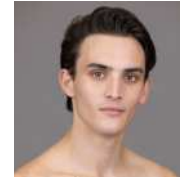


JORDAN LOVELACE

Joined Ballet Austin TWO in 2023

Originally from Dallas, TX, Jordan trained at The Dallas Conservatory and Booker T. Washington for the Performing and Visual Arts. In 2015, he won the "Senior Grand Prix" at YAGP and in 2017 was awarded a scholarship to London's Royal Ballet School summer intensive. In 2018, Jordan attended The Washington School of Ballet

dancing works by Mimmo Miccolis and Xiomara Reyes, and roles including Solor in *La Bayadere* and Basilio in *Don Quixote*. With The Washington Ballet, Jordan danced the Prince in *The Nutcracker* as well as company and character roles in Julie Kent's and Victor Barbee's *Sleeping Beauty*. A year later, he went to San Francisco Ballet School and then to Houston Ballet as an apprentice for the 2021-22 season. In Houston, Jordan danced in Stanton Welch's *Silvia* and *Young Person's Guide to the Orchestra*.



JORDEN MAJEAU

Joined Ballet Austin TWO in 2023

Born in New Orleans, Jorden trained at Jefferson Ballet Theater under the instruction of Kimberly and Kenneth Beck. He spent time in Salt Lake City as a Trainee at Ballet West where he trained under Jeff Rodgers and academy faculty. Jorden is excited to see what Austin holds for him this season. He would like to thank his family for the support they have provided him and to thank Ballet Austin for the opportunity to bring magic to the stage this year.



ALEXANDRA OWENS

Butler Fellow: 2021-2023
| Joined Ballet Austin TWO in 2023

Alexandra began her dance training at the age of 3 in Wichita, KS, under the direction of Jill Landrith. She performed with Ballet Wichita from 2013-2019. In the fall of 2019, she joined Next Generation Ballet's trainee program under the direction of Philip Neal. Additionally, Alexandra has attended summer intensives at Kansas City Ballet, Oklahoma City Ballet, Ballet Austin, Pacific Northwest Ballet, and Next Generation Ballet. With Next Generation Ballet, she performed the roles of Clara and Shepherdess in *The Nutcracker*, as well as the Pas de Trois and Spanish in *Swan Lake*.

DANCERS



JACKSON RANKIN

Butler Fellow: 2022-2023
| Joined Ballet Austin
TWO in 2023

Originally from Fayetteville, Arkansas, Jackson spent his early years moving around the U.S. playing numerous sports and adventuring outdoors. He started dancing at a small studio in Northern California where he trained for 5 years. He later received a scholarship to dance with the Goh Ballet Academy under the direction of Chan Hon Goh. Since Jackson joined Goh Ballet Academy, he has danced in notable roles such as Basilio in *Don Quixote*, Franz in *Coppelia*, and the Nutcracker Prince. He has spent his summers training with Ballet West, The School of Washington Ballet, and Goh Ballet Academy.



JULIUS TAIBER

Butler Fellow: 2020-2022
| Joined Ballet Austin
TWO in 2022

Born in Munich, Germany and raised in Greenville, SC, Julius began his early dance training at the International Ballet Academy at the age of 9. From 2014-2017, he trained at the Nutmeg Conservatory for the Arts and then with the Next Generation Ballet from 2017 – 2018. He then attended Houston Ballet Academy under the direction of Claudio Munoz where he was given the opportunity to perform in Stanton Welch's *Bruiser* and *The Nutcracker*, as well as Ben Stevenson's *Sleeping Beauty*. He has attended summer programs at Next Generation Ballet, Pacific Northwest Ballet, Ellison Ballet, Boston Ballet, and Houston Ballet.

Butler Fellows



REAGAN ARENZ

Joined Butler Fellowship
Program: 2022

Originally from Houston, TX, Reagan began dancing at age two. She advanced into pre-professional training at Vitacca

Dance under Kelly Ann Vitacca & Phillip Broomhead. At 15, Reagan moved to NC joining Cary Ballet Conservatory & Company under Mariaelena Ruiz & Heather Iler. With Cary Ballet, she performed the roles of Sugar Plum Fairy & Snow Queen in *The Nutcracker*, Russian demi in Balanchine's *Serenade*, and in Krista King-Doherty's *Mechanisms* at the Festival de Danza in Orizaba, Mexico. Reagan attended summer intensives at Houston Ballet, Orlando Ballet, Philadelphia Ballet, and Boston Ballet..



AMELIA BEDNAR

Joined Butler Fellowship
Program: 2022

From Stillwater, Minnesota, Amelia began her training with Minnesota Dance Theatre at age 10. From ages 14 to 17, she performed with the company as a trainee, including such works as Loyce Houlton's *Nutcracker Fantasy*, *Carmina Burana* (Loyce Houlton), Jennifer Hart's *Unbound*, and *Enchantment* by Lise Houlton. She has attended summer programs with Pacific Northwest Ballet, School of American Ballet, and Miami City Ballet, where she spent her senior year as a pre professional student. Last season she trained with Westmet Classical Training where she was casted as the Snow Queen in their production of *A Nutcracker Sweet* and as a soloist in *Giselle*.



ANGELINA CARBONARO

Joined Butler Fellowship
Program: 2023

From Clearwater, Florida, Angelina began her training with Tampa Bay Ballet at age 6. In 2018, she joined Next Generation Ballet's trainee program and studied under Philip Neal, where she performed several classical and contemporary works. Some of her most notable roles were Snow Queen, Clara, and Dew Drop in *The Nutcracker*, Kitri in *Don Quixote*, Bluebird Pas de Deux in *Sleeping Beauty*, in addition to other roles in George Balanchine's *Western Symphony*, *Swan Lake*, and *Le Corsaire*. Angelina attended summer intensives at Pacific Northwest Ballet, Pittsburgh Ballet, Sarasota Ballet, Carolina Ballet, and Joffrey Ballet.



CARLY DARNELL

Joined Butler Fellowship
Program: 2022

Carly was raised in Beavercreek, OH, and began dancing at the age of three. She received her pre-professional training and mentoring from Barbara Pontecorvo and Gregory Robinson at Pontecorvo Ballet Studios and Gem City Ballet (GCB). There, she performed in twelve seasons of *The Nutcracker*, including the roles of Clara, Flowers, Principal Arabian, Dew Drop Fairy, Snow Queen and Sugarplum Fairy. Carly also performed Kitri in *Don Quixote*, principal roles in *Giselle* and *Paquita*, The Cygnets in *Swan Lake*, and corps in *Coppelia* and *Cinderella*. Over the past six summers, Carly trained with Ballet Chicago, School of American Ballet and Ballet Austin.



ALEXA DOLLAR

Joined Butler Fellowship
Program: 2023

Originally from Atlanta, Georgia, Alexa began her training at the age of 3. She progressed into pre-professional training with the Colburn Dance Academy in Los Angeles when she was 14. Since being with Colburn, Ms. Dollar has performed lead roles in George Balanchine's *Motzartiana*, Justin Peck's *Pulcinella Variations*, and Jerome Robbins' *Goldberg Variations* and *Antique Epigraphs*. Over the past 6 summers, Alexa has trained with Boston Ballet School and Pacific Northwest Ballet School.



KATELYN HAGEL

Joined Butler Fellowship
Program: 2023

Born in Daegu, South Korea and raised in Ridgewood, NJ, Katelyn began her training at Petrov Ballet School where she performed the roles of Snow Queen, Dewdrop, and Sugar Plum Fairy in *The Nutcracker* with The Catskill Mountain Foundation. In 2020, she joined The Washington School of Ballet's Professional Training Division under the tutelage of Xiomara Reyes, Rinat Imaev, and

DANCERS

artistic director Julie Kent, and was promoted to Trainee the following year. Katelyn's repertoire with the company included Julie Kent's and Victor Barbee's staging of *Swan Lake*, *Giselle*, *The Sleeping Beauty*, Septime Webre's *The Nutcracker*, and George Balanchine's *Theme and Variations*. She spent her summers training at San Francisco Ballet, American Ballet Theatre, The Washington School of Ballet, and Tulsa Ballet.



ALAYNA HAMADE

Joined Butler Fellowship Program: 2023

Native to Austin, Alayna began dancing at the age of three. She received her pre-professional training from Kelly Yankle at the Austin Dance Conservatory. At the age of 16, Alayna was accepted to the University of North Carolina School of the Arts on scholarship. During her time at UNCSA, Alayna performed the roles of Sugar Plum Fairy and Clara in Ilya Kozadayev's *The Nutcracker* as well as principal and soloist

roles in Claudia Schrier's *First Impulse* and George Balanchine's *Symphonie Concertante*. Alayna is excited to be back in her hometown as a member of the Ballet Austin Butler Fellowship program.



NYA MITCHELL

Joined Butler Fellowship Program: 2022

Nya began training with the Ballet Austin Academy at the age of three. She's enjoyed performing in several Ballet Austin productions, including Stephen Mills' *A Midsummer Night's Dream*, *Cinderella*, and *The Nutcracker*, along with Septime Webre's *ALICE* and Paul Vasterling's *Peter Pan*. With the academy, Nya was featured in Mills' *Coppélia* and *Paquita*, and pieces by Jennifer Hart, Christopher Swaim, and Alexa Capareda. Nya has also performed as a soloist with Performa/Dance. She's trained in summer programs with the Royal Danish Ballet, Alonzo King LINES, Pacific

Northwest Ballet, American Ballet Theatre (New York), Miami City Ballet, BalletMet, and Boston Ballet.



ELIANNA PRICE

Joined Butler Fellowship Program: 2023

Born in Rochester, NY, Elianna primarily studied classical ballet and contemporary. At Odasz Dance Theatre, Elianna competed in world-renown competitions such as YAGP and ADC/IBC receiving 1st place overall YAGP awards in 2018. She also performed at the Nervi Festival in Genova, Italy in 2020. At 19, she joined Texas Ballet Theater Studio Training Company. While at TBT Elianna performed with the main company, enjoying roles such as Clara and Snowflake in Ben Stevenson's *The Nutcracker*, The Bird in Tim O'keefe's *Peter and the Wolf* and new works from many of the top company members.

b BALLETAUSTIN
DANCE CLASSES FOR ADULTS

GET STARTED WITH A
\$5 FIRST CLASS TODAY!

BALLETAUSTIN.ORG/DANCE-FITNESS
512.501.8704 | DOWNTOWN



CLAIRE STURGEON

Joined Butler Fellowship Program: 2023

From Cincinnati, Claire began her training with the Cincinnati Ballet Academy. Alongside Cincinnati Ballet, Claire attended The School of Creative and Performing Arts and performed classical, neoclassical, modern, and contemporary pieces. At 16, Claire joined Cincinnati Ballet's Professional Training division studying under Sarah Hairston and Victoria Morgan. She was promoted to Trainee for the 2022-23 season under direction of Jodie Gates. Claire's repertoire with the company included corps de ballet roles in Victoria Morgan's *The Nutcracker*, *Cinderella*, and *Bold Moves Performances*, as well as the trainee production of Balanchine's *Raymonda*. In the summers, Claire trained with San Francisco Ballet, Ballet West, and Ballet Austin.



AVA TELLIER

Joined Butler Fellowship Program: 2023

Originally from Minnetonka, Minnesota, Ava received her pre-professional training at Westmet Classical Training under Allynne Noelle and Thomas Brown. During this time Ava had the opportunity to perform roles such as the Sugar Plum Fairy and Dew Drop Fairy in Allynne Noelle's *Nutcracker Sweet*. She also performed lead/featured roles in multiple Maria Konrad works, Sidra Bell's *Beyond The Edge Of The Frame*, and Dark Angel in George Balanchine's *Serenade*. She has attended summer's at Pacific Northwest Ballet on scholarships before most recently accepting the Butler Fellowship position.



Photos by Anne Marie Bloodgood

MANAGEMENT COMMITTEE

PRESIDENT
Sly Majid

CHAIR
Sarah Butler

IMMEDIATE PAST-PRESIDENT
Edie Rogat

TREASURER
Tom Welch

SECRETARY
Dr. Joaquin Delgado

LONG CENTER LIAISON
Alexander C. Ladage

AT-LARGE MEMBERS
Daniel Byrne
Nora Linares-Moeller
Everett Plante
Mireya Zapata

CHAIR EMERITUS
Jare Smith

Sofia Avila
Grae Baker
Becky Beaver
Nikki Bryant
W. Andrew Buchholz, M.D.
Greg Casas
Socar Chatmon-Thomas
Ryan Coaxum
Jeffrey P. Coddington
Ada Corral
Priscilla Guajardo Cortez
Kristen Castleman Day
Zahie El Kouri
Cliff Ernst
Cynthia D. Fresch
Montse Fuentes
Renée Gallagher
Jennifer Garcia, PE, CFM
Wade Giles

Richard J. Groos
Jennifer Guthrie
Serena Hicks
E.D. Hill
Chris Hosek
Jon Ivester
Janette Keating
Winnie W. Law
Ana-Barbara Llorente
Jennene Mashburn
Judy Matula
Nikelle S. Meade
Virginia Miracle
Emily Moreland
Meeta Awasthi Morrison
Nidhi Nakra
Elizabeth V. Newman
Melissa Perez
Charles A. Phillips

Elizabeth T. Powdrill
Forrest Preece
Deanna Rankin
Ryann Reaud
Andrew Roth
Cord Shiflet
Jade M. Shopp
Janice L. Ta
Sarah Teten
Judge George C. Thomas
Cathy Thompson
Natasa Valocchi
Dr. Melva K. Wallace, PhD
David Webber
Thea Whalen
Aisha White, M.D.
Jason R. Wills
Samantha Wiseman
Scott G. Yarborough



b BALLETAUSTIN
o PILATES

2 LOCATIONS:

DOWNTOWN
DELL JEWISH COMMUNITY CENTER

GET STARTED WITH AN INTRO OFFER!

BALLETAUSTIN.ORG/PILATES
512.501.8704

THANK YOU TO OUR SPONSORS

2023/24 SEASON SPONSORS

Season Underwriter



<p>STEPHEN MILLS' HAMLET</p> <p>DRS. JOANN HUNTER JOHNSON & KENNETH JOHNSON</p>		<p>THE NUTCRACKER</p> <p>H-E-B HelpingHere</p> <p>MORELAND PROPERTIES</p> <p>BALLETAUSTIN GUILD</p> <p>StDavid's HealthCare</p> <p>ubeo BUSINESS SERVICES</p>	
<p>TRIAD: THREE BOLD DANCES</p> <p>Bubble Gum Commissioned by DR. ROSANNE BUTERA CHIROPRACTOR</p> <p>KODOSKY FAMILY FOUNDATION</p>		<p>STEPHEN MILLS' POE / A TALE OF MADNESS</p> <p>Commissioned by SARAH & ERNEST BUTLER</p> <p>butler NEW CHOREOGRAPHY ENDOWMENT</p> <p>The Bancroft Initiative</p> <p>Texas Commission on the Arts</p> <p>ECPR TEXAS</p> <p>MARRIOTT AUSTIN DOWNTOWN</p>	
<p>THE SLEEPING BEAUTY</p> <p>JOSIE BRUNI KNIGHT</p> <p>DAVID BOOTH</p> <p>CLARA & PAUL BANCROFT</p> <p>The Fifth Age of Man Foundation</p> <p>BOULETTE GOLDEN & MARIN L.L.P.</p> <p>MAXWELL LOCKE & RITTER</p>		<p>PR AGENCY SPONSOR</p> <p>ECPR TEXAS</p>	
<p>OFFICIAL PROGRAM SPONSOR</p> <p>EN FACE MAGAZINE BALLET COLLECTION</p>		<p>HOSPITALITY PARTNERS</p> <p>TWIN LIQUORS FINE WINE & SPIRITS</p> <p>whim HOSPITALITY</p> <p>AUSTIN catering</p>	
<p>NIGHT OF COMMUNITY</p> <p>Austin Community FOUNDATION</p> <p>THE REAUD CHARITABLE FOUNDATION</p> <p>Texas Capital</p>		<p>GOVERNMENT</p> <p>Texas Commission on the Arts</p> <p>NATIONAL ENDOWMENT for the ARTS arts.gov</p> <p>Ballet Austin is supported in part by the Texas Commission on the Arts and the National Endowment for the Arts.</p>	
<p>EDUCATION PROGRAMS</p> <p>Underwriter POWELL FOUNDATION</p> <p>Bank of America.</p> <p>Google</p> <p>PNC</p> <p>3M</p>			
<p>THE NUTCRACKER SCHOOL SHOWS</p> <p>H-E-B HelpingHere</p>	<p>PETER & THE WOLF SCHOOL SHOWS</p> <p>APPLIED MATERIALS FOUNDATION</p>	<p>EDUMOVES</p> <p>MICHAEL & ALICE KUHN FOUNDATION</p> <p>News Corp</p> <p>Texas Commission on the Arts</p>	
<p>PINK PILATES</p> <p>TEXAS ONCOLOGY More breakthroughs. More victories.</p>		<p>ACTIVE AGING</p> <p>AgingWell</p> <p>ABC HOME & COMMERCIAL SERVICES</p>	
<p>BALLET-O-MANIA!</p> <p>THE JUNIOR LEAGUE OF AUSTIN Community Project 2023-2024</p>		<p>GET FIT! 2024</p> <p>H-E-B HelpingHere</p>	
<p>OTHER SPONSORS</p> <p>TEXAS ECONOMIC DEVELOPMENT OFFICE</p> <p>movability</p> <p>GOODNIGHT RANCH</p> <p>HOUSING AUTHORITY OF THE CITY OF AUSTIN</p> <p>kasa</p> <p>LIBRARY INTERIORS OF TEXAS</p>			

OTHER CORPORATE, FOUNDATION & IN-KIND SUPPORT

Albertson's Safeway, AmazonSmile Foundation, Anderson's Coffee, Goodcoin Foundation, Lily Pulitzer, Magnify Electric, Trudy Foundation, Watkins Insurance

ANNUAL CAMPAIGN DONORS

Thank you! We would like to recognize the generosity and support of the individuals who help make the 2023/24 season possible. Listing reflects donations as of September 6, 2022–September 6, 2023

\$200,000+

Ballet Austin Foundation

\$100,000+

Ballet Austin Guild

PREMIER FOUNDERS

\$20,000+

Clara & Paul Bancroft
David Booth
Dr. Rosanne Butera,
Chiropractor
Sarah & Ernest Butler
The Fifth Age Of
Man Foundation
Drs. JoAnn Hunter Johnson
& Kenneth Johnson
Josie Bruni Knight
Kodosky Family Foundation

PREFERRED

FOUNDERS \$10,000+

Virginia & Gilbert Burciaga
Dr. Beverly Dale
Renée Gallagher &
Jason Pennington
Jennifer Garcia
Janette & Patrick Keating
Jennene & K. Ray Mashburn
Rosie & Roger Oberg
Sissi & Gerard O'Reilly
Liana & Arjun Rao
Eddie Rogat & Cotter
Cunningham
Cathy & Dwight Thompson

FOUNDERS \$7,500+

Victoria Cheney
John-Michael &
Priscilla G. Cortez
Hollis & Robert Gaston
The Norrod Family
Melissa Perez & Paul Rashidi
Charles A. Phillips
Linda Ball & Forrest Preece
Anita & Oscar Rios
Carolyn & Marc Seriff

PREMIER PARTNERS

\$5,000+

In Memory of Gregory Hild
Becky Beaver
Nikki Bryant Irion & Terry Irion
Chris Cheever
Jeffrey P. Coddington
Emily & Ryan Deiss
Dr. Joaquin Delgado
Ann & James Downing
Doug Eicher & Bonnie Mills
Martha & Cliff Ernst
Nancy Fitzpatrick
Wade Giles & Jeffrey Schab
Jeremy Guiberteau
& Dan Jackson
Jennifer Guthrie
Georgia & Don Henrich
Serena Hicks
The Joseph Hill Family
Joy & Gregory Hodgson
Chandra & Chris Hosek
Kathie & Spike Jones
Alexander C. Ladage

Winnie Law / DPR
Construction
Judy & Michael Matula
Nikelle S. Meade
Emily Moreland
Drs. Cathy & Rodney Nairn
Dr. Tanuj & Nidhi Nakra
Katie & Jesse Newland
Elizabeth V. Newman
& Isabelle C. R.

Wanda A. Reynolds
Naleah & Josh Ryg
Jenna Salwen
Fern & Jerre Santini
Jare Smith
Lonnie Karotkin Taub
& Albert Taub
Judge George C. Thomas
& Jolsna John Thomas
David Webber &
Ransom Baldasare
Tom & Sally Welch
The Wills Family
Eva Womack

PRINCIPAL

PARTNERS \$3,500+

Steve Adler & Diane T. Land
Sofia Avila
Grae Baker & Nicole Carosella
Joanne Bal & Gnana
Selvadurai
Sara & Mark Brinton
Andrew & Elizabeth Buchholz
Darlene & Daniel H. Byrne
Michelle & Marco Camacho
Socar Chatmon-Thomas
Ryan & Laura Coaxum
Ada Corral & Matthew Ames
Aaron & Kristen Day
Zahie El Kouri &
John Greenman
Ida Ellison
The Fagan Family
Montse Fuentes &
Tom Patterson
Joani & Richard Groos
Jo & Jon Ivester
Nora Linares-Moeller
& Mike Moeller
Andrew Roth & Kevin Little
Ana-Barbara Llorente
Sly Majid & Rachel Loebel
Julia Marsden
Thomas Martin
Virginia & Jed Miracle
Claudia Becerra &
Patrick Montgomery
Dr. Robert J. Morrison
& Meeta A. Morrison
Suzanne & Norman Myers
Alicia & Robert Nellis
Mandy & Everett Plante
Elizabeth & Brent Powdrill
Deanna & Marc Rankin
Ryann & Jorge Rangel
Cookie & Phil Ruiz
Carol & Frank Sheppard
Annie & Cord Shiflet
Jade & Masa Shopp
Stephanie Steenstrup
& Jonathan Vo
Janice Ta & John Beavers
Sarah & William Teten

Natasa & Michael Valocchi
Melva K. Wallace
Betty Marie Welch
Polly & Jay Westbrook
Aisha White
Samantha & Patrick Wiseman
Sarah & Scott Yarborough
Mireya Zapata

PREFERRED

PARTNERS \$2,500+

Anonymous (2)
Dr. Maureen Alexander
Jesse & Grace Ander
Suzanne Deal Booth
Ray & Karen Brimble
Drs. Robert & Cheryl Butler
Jerry Conn
Jessie & Bret Curtis
Tres Davis & Paul Rogers
David A. & Constance B. Elko
Cynthia D. Fresch
James & Sally Gavin
Iris Groten
David L. Harrington
Becky & Richard Herrington
Andrew Hudson
Marta Karpan Mattox
Catherine Leon-Parker
Melanie Lewis
Jessica Lunsford &
Joseph Heilig
Desiree Lynch
Jeff Mace
Alex Manoogian
Mollie McDonnold
Candice & Clayton McKay
Anne & John McKinnerney
David, Teresa, &
Elizabeth Meade
Mona & James Morgan
Rick Morrow & Mark Jones
Gail & Bill Romney
Nancy Scanlan
Danny Snyder
Carolyn & Eric Thompson
Suzanne Tomlin
Valerie & Craig Tyler
Connie & Dan Weaver
Stephanie & Bill Whitehurst

PARTNERS \$1,500+

In Honor of Patricia Walker
Paula & Bob Boldt
David Boswell
Michaela Botha
Myra & Blaine Bull
Dr. Alan Carsrud &
Danny Babineaux
Barbette & John Cooper - In
Honor of Blake Cooper
Barbara & Alan Cox
Gretchen Davis, In memory
of Col. William James
"Greg" Gregory & In
Honor of Cookie Ruiz
Beth & Mark Domel
Betty Edmond
Thomas Edwards
Rose & Carey Epps
Yohan Faulk & Dolina
Logan Faulk
Lori & Alan Freedman
Lorrie & Carlos Garcia

Debra Haas & Marty Hood
Karen Hansen
Dr. Brent Hasty &
Stephen Mills
Sean & Teresa Henry
Jodi & Rocky Holland
Paula & Parker Jameson
Scott Joslove, Texas Hotel
& Lodging Association
Kelley & Carol Knutson
Dana & Daryl Kunik
Flo & Ren MacNary
James Martin & Sky Benson
Linda McDavitt
Suzanne & John McFarlane
Jeff & Tracy Miller
Dr. Jennifer Millspaugh
& Sidney Millspaugh III
Chris & Quenby Mitchell
Judy Morris
Martha & Karl Nalepa
Betty & Charles Oltorf
The Pacey Family Foundation
Mark & Vicki Parsons
Jane Webre & David Plaut
James Popp
Leanne Raesener
Shalini Ramanathan &
Chris Tomlinson
Amy & Ken Rogat
Eddie Safady
The Seach Family
Charlotte A. Smith
Karen Sonleitner
Ingrid & Eric Sprangle
The Steen Family
Maria L. Talamo &
Patrick S. Murphy
Shannon & Clare Taylor
J. Craig Wallace
Hilary & Stan Young

CORPS \$1,000+

Anonymous (2)
A Friend
In Honor of Emma Reiss
In Memory of Carol Rivera
Victoria Avila
Aileen & Mike Aviles,
In memory of Virginia
& Ben Aviles
Juliana & Bryan Azar
Mark Berman & Josie Howard
Casey Blass & Lee Manford
Rosalie & Jim Boldin
Molly Bray
Cathy Brown
Lynn Carter & Alan Moore
Caroline Caven, In
memory of Chuy Caven
Tana & Joe Christie
Paula Jean Cipollone
Rachel & Jeffrey Cloyd
Jim & Tracey Cooley
Mary Creecy - In honor
of Millie Chen
Stacia Crescenzi
Reji DiNicola
Dorothy Drummer
& Greg Eden
Susan & Claude Ducloux
Alice Fuller
Susan Gorishek
Kelvon Hansen & Neil Ely
- In honor of Frank Shott

J. Hogan & L. Biggar
Elizabeth & Harold Ingersoll
Susie & Pat Kelly
Susan & David Kraemer
Marie & Christophe Largilliere
Nancy & John Loftis
Christi Cuellar Lotz
& David Lotz
Mari & Greg Marchbanks
Veronica & Ryan McDonald
James Meeker
Kay & Eric Moreland - In
honor of Emily Moreland
Kim & Ryan Pitylak
Coralie & Jim Pledger
Sofie Pompa
Rebel Princess Creative
Trish Roach & Rob Martin
Rachel Robinson - In honor
of Ethan Robinson
Leslie & George Rodgers,
In Honor of Lucy Record
Elizabeth & Anthony Siela
Charles & Carole Sikes
Philip Spertus
Julie Springer
Thomas W. Stephenson
& Family
Lauren & Daniel Thompson
William Austin Tunstill III
Shelby Wanstrath
Donald R. Wertz
Patrick & Audrey White
Wiatrek Family
Carol Wood
Andrea & Josh Woodruff

CONTRIBUTORS

\$500+

Anonymous (2)
In Honor of Sarah
& Ernest Butler
In Memory of Walter E.
& Betty Boyd Foster
In Memory of Paula Marcallino
& in Honor of Nya Mitchell
Cindy Work & Greg Abell
Jim & Debbie Alsup
Nathan & Andrea Andrews
Art & Kylie Arias
Rachel & Bill Blackstone
Jodi, Rusty, & Rhys Boyer
The Brannen Family
Leslie Browder
Lynn Butler
Laura Catania
F. J. Cheff & Sharon Shuppert
Cline Family
Heather Traeger & Jeff Cohan
Larry Connelly
Kevin & Jennifer Coyle
Allison Dow
Joe A. Draker
Stacy & Richard Dunavan
Janet R. Eaddy
Heidi Evatt
Jill B. Fatzer
Carol & Mark Fernandez
Gene & Kristen Fojtik
Mark Gagnon
Michelle George
Shelby Goodrum
Jennifer & Scott Gordon
Adriana & Jonathan Graf

ANNUAL CAMPAIGN DONORS

Kevin & Laura Gupton
 Louise & Scott Haigler
 Marilyn Halpin
 Kathleen Hausenfluck
 Margaret Herman
 Sharon & Ken Herman
 Blake & Joan Holman
 Brooke & Levi Holmes
 Tyresse Horne &
 Francois Waelbroeck
 Ammad Jilani
 Jacqueline & Kevin Johnson
 Krystin & Mike Johnson
 Doug & Tori Jones
 Mark Kernan
 Jan Knox
 Pilar Korgel
 Kathleen Irvin Loughlin
 Michelle Martin
 Kelly & Lizzy Mattson Hankins
 Laurence McCullough
 & Linda Quintanilla
 R. John & Melanie Miner
 Michelle & Chris Mitchell
 Gordon Moore & Alexis
 Simon Moore
 Maureen Mulrooney
 Charlene & Thomas Noble
 Dorothy Overbey & Mac Prible
 Michael Owen
 Bill Piner
 Milton & Shunne Powell
 Ethan Price & Lauren Blair
 Rick & Rhonda Ravel
 Daniel E. Rodriguez
 JR Ruiz & Jaxson Warrick
 Deena & Mike Santori
 Chris Scheetz
 Jennifer & Kirk Schell
 Vlada & Gennadi Sheber
 Braden Smoot & Ashley
 Greer-Smoot
 Dale & Stephen Sonnenberg
 - In honor of Vicki Parsons
 Patrick & Jessica Starley
 Kate Stoker
 Araceli Tapia
 Kimberly & Jim Taylor
 Hannah Temple &
 Christopher Sanders
 Marian Louise Templin
 Bill & Mary Throop
 Kay Tyler, in honor of
 William Tunstill
 Virginia Urban
 Laura Villagran Johnson
 Jordan Walker
 Anne Walthall
 Shan Wang & Travis Owens
 Karen & Andrew White
 Susan White
 Sherry & Richard Wilkison
 Karlan & Cam Witt
 Ben Woods
 Lital & Arik Yaacob
 Jeriad & Jennifer Zoghby

SUPPORTERS \$250+

Anonymous (5)
 In Honor of Deacon
 & Harper Henrichs
 Anne & Michael Barnett
 KR Barron
 Mr. Darnese A. Bell, Jr.
 Marybeth & Tom Bolerjack

Flannery Bope
 Joe & Cassandra Brecht
 John & Kelly Breeden
 Dianne Brown
 Yang Cao
 David de la Pena
 Antonio & Katherine
 de la Pena
 Mrs. Lanelle Deardorf
 Ashley Del Bello
 Linda DeMayo
 The Dougherty Family
 Amber Duke
 The Egger Family
 Keelyn & Becky Ericson
 Amy Estes
 Tammy Fotinos
 For Kids' Sake
 Dan & Jacque Fowler
 Dr. Robert & Sherrie Frachtman
 Claudia & Glenn Garvey
 Kelsey Gibson
 Dawn R. Ginestra
 Priscilla Gonzales
 Ann S. Graham &
 Arlen Johnson
 David Carr & Anne Jane Gray
 Handwerker Family
 Kimberly Harrison &
 Roger De Leon
 Brian & Rose Hensley
 Michele Hildrum
 Allison Holland
 Jim & Susan Houchins
 Stephanie Snyder &
 Michael Ikeya
 Kevin Jickling
 Allegra Johnson
 Kellye King
 Emily & James Kochanski
 Julie LeFebvre
 Justin & Irina Litchfield
 Sandra Littlejohn
 Kira & Chris Lombardi
 Lorn MacDougal
 Jane-Elizabeth Madison
 Bart Martinec
 Sarah & Lucy Martinez
 Ricky & Laura Matz
 Jodi Medlock
 Susan Morehead
 Kilyong Natho
 MaryEllen O'Neil
 Kenneth Owens &
 Lena Brown-Owens
 Aviana Parker
 Cynthia Pedigo
 Virginia Phillips
 Joan & Kamy Pinkham
 Nancy & Mark Pollard
 Carol Rains
 Nancy Lee Ruyter
 Anna Salguero
 Amanda Salinas
 Lisa & Orlando Saucedo
 Jenny & Conan Saunders
 Gisele Schaefer &
 Kristiana Schaefer
 Michelle Schumann
 & Matt Orem
 David & Susan Sheppard
 Rich & Celina Skeen
 Tucker Stipe
 Lori Strong
 Brooke & Laramie Stroud

Nicole & Adam Swies
 Ali Tabrizi & Dona Avery Tabrizi
 Vickie & Rex Taylor
 Trisa Thompson & Jack Jacobi
 Erma Torres
 Suzon Tropez Holmes
 Ben & Barb Truskoski
 Daylia Vaughan
 Michael Walters
 Richard Webster
 Maggie Wofford
 Dr. Janet Yen

PATRONS \$100+

Anonymous (13)
 In Honor of Olivia Devey
 In honor of Grace Harrell
 In Honor of Annalise Noria
 In Honor of SarahNelle,
 dancer & poet
 In honor of SCHAMPIONS
 In Honor of Susan Sharp
 Felicia Adams
 Katy Aldredge
 April Allen
 Eugene Alvarez
 Julyya Alvarez
 Kimberly Amicon
 Diane & Rick Andersen
 Alexander Appa
 Jesse Atkinson
 Alisha Austin
 Tina Austinson
 Amy Baer
 Stephen Bagwell
 Lauren Bajwa
 Jerimy Alan Bean
 Frank Bean
 Brian & Patience Beck
 Sidnee, Savannah,
 Michelle, & Xavier
 Kari Bennett
 Harry Berg
 Dana Beyert & Dave Jones
 Sara Bircher
 Shannon & Collin Bland
 Pam Bonneau
 James Porter Bowden
 Hans & Jillian Box
 Ms. Peggy E Bradley
 Mark Weiss & Janet Bray
 Jenny Bregenzler
 Steven Bryant
 Luz B. Bundick &
 Jacqueline Underwood
 Campbell Family
 Monica & Ruben
 Campos Araoz
 Elise Daniels
 Deborah Casati
 Miranda Cave
 Lee Chapman
 Michael A. Chesser
 Byran Chock
 Sam E. Christy
 Michael & Robin Clark
 Matthew & Ashlee Coffel
 Dr. Minas & Mrs. Melissa
 Constantinides
 Ms. Vicki Copeland
 Alessandra Correa
 Leslie Cox & Duane Sanford -
 In Memory of
 Alexei Bauereis
 Michael Cox

Brandon & Kaycee Crisp
 Jennifer Cunningham
 Ken & Betsy Davis
 Matthew & Tracy Davis
 Beth & Andy Deck
 Janet Declue
 Paul & Lisa Delacruz
 Rachel & Sara Derr
 Angel E. Diaz
 Jennifer DiZio
 Sharon Dockery
 Mary Donohoe
 Tiffin Dove
 Diane Drew
 Leslie N. Durand
 Melodie Durst
 Richard & Brenda Duval
 Stella Dyer
 Molly Ebeier
 Randall H. Edwards
 Lee Elizer
 Dr. Yvonne A. Essandoh
 Debi & James Evans
 Neal Falgoust
 Mary Fernandez
 Edie Finch
 Lauren Ford
 Sara Gaetjens
 Erica Garza
 Wendy George
 Laurie Gharis
 Joel & Regina Goldstein
 Victor M. Gonzalez
 Lois & Ira Goodman
 Courtney Graeber
 Ryan & Courtney Greene
 Carla & Douglas Greenleaf
 Becky & Wayne Gregory
 Laura Gross-Daly
 Joanne Hanifan
 Linnie & Lora Harness
 Joel & Jessica Harper
 Page Heller
 Beth Helm
 Tiburzio Herrera
 Laurie Higginbotham
 & Jamal Alsaffar
 Marsha Hoffer
 Allie Hope
 Marilyn Hopper, In honor
 of Becky Beaver
 Greg Horejsi
 Dr. Jennifer Hritz
 Keith & Carolyn Husbands
 I Will Go Ministries
 Nathan Idais
 Dr. Aruna Jahoor &
 Amara Nemanich
 Mr. James Jeffries
 Alyssa Johnson
 Kathryn Judge
 Dr. Anil & Kristina Kashyap
 Emily Keating & Zander Smith
 Jonathan Keena
 Lori Keller & Jason Weiner
 Kristin Knight
 Ashley Kocurek
 Pat Kopychak
 Mrs. Carrie Kroll
 Paul & Valerie Kuwamura
 Rennison Lalgee
 Emily Lamb
 Michele Langham
 David & Melanie Larson
 Ann Laubach

Jessica & Andrew Lee
 Michelle Lehrach
 Andrea Lember
 Mary Lovell
 Phillip & Veronica Loya
 Amy Lydon
 Helen Lynn
 Ryan & Cheryl MacDonald
 Patty Lorraine Maffei
 Jared Mahoney
 Christy L. Maile
 Jessica Mangrum
 Dayna Manning
 Allison Marakovic
 Heather Kae Marshall
 Jennifer Master
 Judith Tuttle McCarthy
 Carey Leigh McDonald
 David & Mary McDonald
 Ruth McEntire
 Kari McGowan
 Jane G. McMaster
 Danelle Melton
 Katrina Elizabeth Meredith
 Kimberly & Steve Merritt
 Hoagie Merry
 Joseph & Daniella Midura
 Maggi & Belle Miller
 Steven Mitchell
 Suzanne Mitchell
 Dian Miujison
 Denise Moore
 Homer Moyers
 Nancy & Leo Mueller
 Judith & William Munyon
 Kathi Murphy
 Edna Nation
 Seth & Amy Nielson
 Drs. Dean & Marlowe
 Niemeyer
 Leslie Noble & Chris Brown
 Catherine Norwood
 Bridget O'Brien
 Oropeza Blanco Family
 Allison Orr
 Annivive Palm
 Linda Parker
 Rose Parsons
 Grania Patterson
 Kathleen Penn
 Sergio Andres Perez
 Amandine Perrault
 Mr. & Mrs. I. Russell Phillips
 Mr. & Mrs. Wayne Porter
 Manuela Powell
 Rachel Pruett
 Bob & Gay Puckett
 Kelly Pullin
 Melanie Quintana
 John Quirein
 Dana Rachal
 Justin & Katy Rankin
 Brenda Rappaport
 Marianne Reat & Mark Estes
 Sharon Reeves
 Kristine Ricca
 Alyce Richardson
 Jenna Rinas
 Ann Robbins & Steve Buffum
 Max Rohleder & Teri Wood
 David Ross
 Victoria Catherine Rotchford
 Linda Rowe
 Johanna Royo
 Alissa Saenz

ANNUAL CAMPAIGN DONORS

Continued

Vidar & Lieve Saether
Amy & Kaam Sahely
Stephen & Paula Sansom
Michele Schwartz &
Sandy Schwartz
The Sennings, In loving
memory of Carla
von Faber-Castell
Barbara Shack
David & Annie Shank
Michael Shirley
Irene Shoghi
Barry & Marcia Silverberg
Cristy Simon
Kristen Simpson
Laura Smith
Paul Kevin Smith & Dino Costa
Glynis Smoot
Kevin Smothers
Brian Squires
Heather Anne St. Pierre
Dorothy Stanford
Ron & Jo Ann Stehle
Kimberley Stengel
Stephanie Stephens
Jamee & Charlie Stewart
Mr. & Mrs. Charles L. Strehli
David Sullivan
Shelley Summers &
Evelyn Sames

Ms. Donna Sundstrom
Stephanie Anne Swedlund
Aimee Taggart
Celeste Taylor
Dan Terpening
Cathy Newman Thomas
Terri T.
Lea Thompson
Maria J. Tinio
Kathryne Tovo
Robin Turner
Mrs. Kirsten Tuttle
Dr. Allison Urrutia
The Vertuno Family
Tony Villegas
Kerry Waldrep
Milissa & Gary Warren
Roy Weaver
Barbara Wensel
Patrice & Gary Werner
Patty Wetzel
Kalli Wild
James & Karen Wilder
Glenn Williams
Thomas Wilson
Mary Wise & Steve Saurenman
Debbie Zappen
Diana Zuniga & Victor Woods



Photo by Anne Marie Bloodgood

TICKETS \$15-\$125
BALLETAUSTIN.ORG
512.476.2163

The Sleeping Beauty

MAY 10-12 | THE LONG CENTER

 **BALLETAUSTIN**



BALLET AUSTIN FOUNDATION

To provide a legacy for generations to come, Ballet Austin established the Ballet Austin Foundation in 1998 to receive endowment gifts and planned estate giving. This permanent fundraising effort sets in motion a bold vision for our future! Endowment gifts made today create an impact in perpetuity and provide long-term and predictable support. Deferred gifts (commitments to the Legacy Circle) through bequests, beneficiary designations and other charitable gift plans will enrich the lives of future generations. Your support of the Ballet Austin Foundation ensures that we are Here for Good.

BALLET AUSTIN FOUNDATION BOARD OF TRUSTEES

CHAIR

Cathy Thompson

VICE CHAIR

Emily Moreland

TREASURER

Edie Rogat

SECRETARY

Sarah Butler
Founding Chair Emeritus

LEGACY CIRCLE CHAIR

Cliff Ernst

Sly Majid,
Ex-officio, Ballet Austin President

Tom Welch,
Ex-officio, Ballet Austin Treasurer

Diane T. Land
Jennene Mashburn

ADVISORY COUNCIL

Michael Blue
Paula Boldt
Blaine Bull
Dorothy Drummer
Jennifer Guthrie
Alex Ladage
Ryann Reaud
Stephanie Whitehurst

Derry Swanger, Swanger Prickett LLP
Legal Advisor

Jon Fellows, Fiducient Advisors
Financial Advisor

ENDOWMENT DONORS

\$6,000,000+

Dr. & Mrs. Ernest C. Butler

\$100,000 +

Anonymous
In loving memory of Nancy Carpenter
Ballet Austin Board of Directors
Janette & Patrick Keating
Mr. & Mrs. Joe Long

\$50,000+

Anonymous
In honor of Sarah Butler, 2022 BAF Trustees
and Advisory Council Members
In loving memory of Martha B. Harrington
In loving memory of Terri Lynn Wright

Ballet Austin Guild
Dr. & Mrs. Craig C. Kuglen
Edie Rogat & Cotter Cunningham
Dilum & Surangi Chandrasoma
Peter Schram & Harry Ullmann

\$25,000+

In loving memory of Marilyn H. Ferguson
Steve Adler & Diane T. Land
Barbara & Alan Cox in memory of James Alan Cox
Martha & Cliff Ernst
Jo & Jonathan Ivester
Catherine Leon-Parker
Jennene & K. Ray Mashburn
Emily Moreland / Moreland Properties
Cathy & Dwight Thompson

LEGACY CIRCLE MEMBERS

Ballet Austin thanks our Legacy Circle members, donors who graciously remember Ballet Austin in their estate plans.

Steve Adler & Diane T. Land
Becky Beaver
Rick Bennett
Paula & Bob Boldt
Dr. & Mrs. Ernest Butler
Darlene & Dan Byrne
Ann & Jim Downing
Martha & Cliff Ernst
Dr. Harvey Evans & Gloria Evans
Malcolm Ferguson
Jennifer Guthrie
David L. Harrington
Becky & Richard Herrington
Nikki Bryant Irion & Terry Irion
Caroline C. Jones
Alex Ladage

Laraine & Leon Kentridge Lasdon
Mike Baryshnikov Le Burkien
Julie Koenig Loignon
Catherine Leon-Parker
Jennene & K. Ray Mashburn
Michael Ellwood Owens
Charles A. Phillips
Forrest Preece & Linda Ball
Wanda A. Reynolds
Cookie & Phil Ruiz
Eddie Safady
Jare Smith
Karen Sonleitner
Mary Walcutt
J. Craig Wallace
Bill & Stephanie Whitehurst

We would be honored to visit with you about tax strategies which may benefit you and your family as you make your year-end charitable giving plans. Please contact Development Director, Christi Lotz, at christi.lotz@balletaustin.org for more information.

Here for **GOOD**

ba BALLETAUSTIN
FOUNDATION

BALLET AUSTIN IS...

HERE TO INNOVATE



HERE TO TEACH



HERE TO SERVE



BALLET AUSTIN STAFF

ARTISTIC TEAM

Stephen Mills, *Artistic Director*
Sarah & Ernest Butler Family Fund
Michelle Martin, *Associate Artistic Director*
Eugene Alvarez, *Company Manager*
Christopher Swaim, *Rehearsal Director*
Alexa Capareda,
Rehearsal Director – Ballet Austin TWO
& Butler Fellowship Program

ADMINISTRATIVE TEAM

Cookie Gregory Ruiz, *C.F.R.E.*,
Executive Director
Lital Yaacob, *Director of Business*
Analytics & Ticketing
Billie Bledsoe, *Director of Operations*
Roshae Richard, *Executive Administrator*
Maureen Cross, *Associate Director of Ticketing*
Jane Trembley, *Database Specialist*
Emily McLaughlin, *Controller*
Jake Hardy, *Facilities Manager*
Paul Petrosky, *Ticketing Manager*
Finda Kollie, *Accounting Associate*

PRODUCTION TEAM*

Bill Sheffield, *Production Director /*
Stage Manager
Steven Myers, *Technical Director*
Tony Tucci, *Lighting Supervisor*
Alexey Korygin, *Wardrobe Director*
Conrad Haden, *Head Carpenter*
Andrew Ferrucci, *Head Electrician*
C.J. Swinburn, *Light Board Operator*
Valerie Sadorra, *Head Props*
Bill Mester, *Head Audio*
Joan Miller, *Head Wardrobe*
Jessica Boettger, *Stitcher*
Bon Davis, *Head Projectionist*
James Cameron, *Assistant Carpenter*
Anthony Celenza, *Props Assistant*
Kate Nance, *Props Assistant*
Richard Reid, *Head Flyman*
Charlie King, *Audio Assistant*
Miriam Jurgensen, *Ballet Austin TWO*
Head of Wardrobe
Brad Wilson, *Associate Production Manager*
Gloria Labatut Davies, *Assistant Stage Manager*

* Stage employees of Ballet Austin are represented by I.A.T.S.E. Local 205.

BALLET AUSTIN ACADEMY

William Piner, *Academy Director*
Michelle Martin, *Faculty Chair*
Jennifer Hart, *Curriculum Manager*
Katelyn Rustagi, *Senior Programs Manager*
LB Flett, *Young Children's Program Manager*
Siobhan O'Donnell, *Registrar*
Jessica O'Brien, *Academy Administrator*
Hannah Neuhauser, *Academy Associate*
Amy Stelly, *Academy Associate*
Rob Greenfield, *Pianist Manager*

EDUCATION TEAM

Pei-San Brown, *Director of Education*
Kathleen Rockefeller, *Associate*
Director of Education
Sam Rosas-Mantilla, *Education Assistant*
Rebecca Tulis, *EduMoves™ Teaching Artist*
McKenzie Chen, *EduMoves™ Teaching Artist*
NaKia Whitaker, *EduMoves™ Teaching Artist*

CREATIVE SERVICES TEAM

Paul Michael Bloodgood, *Associate*
Director, Film & Video Production
Anne Marie Bloodgood, *Senior Manager,*
Digital & Social Media / Chief Photographer
Sarah Pace, *Marketing and*
Communications Manager
Rachel Pérez, *Graphic & Visual Design Manager*
Jazz Collins, *Video Content Creator*

DEVELOPMENT TEAM

Christi Cuellar Lotz, *C.F.R.E.*,
Development Director
Brooke Holmes, *Associate Director,*
Individual Giving
Maria Murphy-Mayberry, *Senior*
Development Manager
Miranda Cave, *Grants &*
Institutional Giving Associate
Claire Coker, *Development Administrator*

BUTLER CENTER FOR DANCE & FITNESS

Vicki Parsons, *Director of the Butler Center for*
Dance & Fitness & Pilates Center
Vlada Sheber, *Pilates Program Director*
Lauren Parra-Faudree, *Associate Director*
of the Butler Center for Dance & Fitness
Rajiv Awasthi, *Customer Experience Team*
Aidan Abraham, *Customer Experience Team*
Katie Qin, *Customer Experience Team*
Irina Raleigh, *Customer Experience Team*
Alexandria Richmond,
Customer Experience Team
Mary Riley, *Customer Experience Team*
Sophie Vaught, *Customer Experience Team*

ACADEMY & BUTLER CENTER INSTRUCTORS

Jenny Alperin, Leah Baxter, Ian
J. Bethany, Courtney Borrero,
Pei-San Brown, Daniel Broxton,
Colin Canavan,
Alexa Capareda, Ivana Castaneda,
Danielle Cortier,
Aisling DiRico, Lisa del Rosario,
Katherine Deutch, Lexi Eicher,
Lauren Parra Faudree, Laura Beth
"LB" Flett, James Fuller, Kaeilie
Geiser, Emmalie George,
Jennifer Hart,
Heather Haycock, Stacey Huston,
Vivian Kaw, Heilla Lain, Fay Leonard,
Jean Claude Lessou, Emily Lofton,
Arletta Howard Logan,
Brenda Susanto Madsen, Kerin Martinez,
Emily McLaughlin, Mia Moi, Annie
Nimmo, Jessica O'Brien, Cicily Oliver,
Sahel Flora Pascual, Elise Pekarek,
Selena Offenberg, Priscilla Pope,
Marissa Ramirez, Lucy Record, Jason
Rhodes, KC Shonk, Megan Richard,
Sam Rosas-Mantilla, Katelyn Rustagi,
Allison Spell, Jadelyn Stanfill,
Morgan Stillman,
Christopher Swaim, Dereke
Thompson, Venese Trejo,
Rebecca Tulis, Sydney Vila,
Ramsay Wall, Taylor Williams

ACCOMPANISTS

Rob Greenfield, *Pianist Manager*
Mike Brown, Shawn Ellison, Rob Greenfield,
Lan-Thach Kratzke, Kelsey
Nelson, Stevie Sparks,
Peter Stopschinski, Ben Tibbetts,
Corinne Vassallo