

The Sleeping Beauty

MAY 10-12 | THE LONG CENTER



ba BALLET
AUSTIN

EN FACE
MAGAZINE





Effortless, Fun Vacations.
Authentic Experiences

Go behind the scenes and experience local hidden gems that delve into the rich culture of each destination. Guided tours take care of the all the logistics — including premium accommodation, first-class meals, and VIP access to the top sites.

With over 300 curated itineraries throughout Europe, Great Britain, The Americas and beyond, experience more on a guided tour or all-inclusive luxury river cruise.

Start your journey at **GETours.com/arts**

or call **1-855-326-5217**

*Scan for free
brochure*



GET
GRAND EUROPEAN TRAVEL



STEP INTO
THE WORLD
OF BALLET

EN FACE
MAGAZINE

enfacemagazine.com



CONTENTS



Photo by Tony Spielberg

7

A Note from the
Artistic Director

9

The Sleeping Beauty

11

Artistic Team & Guests

14

Credits & Cast

15

Synopsis

16

Company

19

Ballet Austin TWO
+ Butler Fellows

20

Dancer Retirements

22

Board of Directors

23

Sponsors

24

Donors

27

Ballet Austin Foundation

29

Ballet Austin Guild

30

Ballet Austin Staff



TIMBER VISIONS

Unique, food-grade
cutting and charcuterie boards.
No stains, no paint, just
domestic and exotic woods.

Each board is a work of art.

www.timbervisions.com

609.828.3976

timbervisions1@gmail.com

Instagram: [timbervisionsboards](https://www.instagram.com/timbervisionsboards)



FROM THE ARTISTIC DIRECTOR



Welcome to *The Sleeping Beauty*!

As the 2023/24 Season comes to a close, I am happy to share with you one of the most beloved classical ballets of all time. Enjoyed over generations by audience members of all ages, *The Sleeping Beauty* is a wonderful way to share Mother's Day Weekend with you.

Since its premiere nearly 150 years ago, *The Sleeping Beauty* remains the quintessential "happily ever after" fairy tale ballet. The classical choreography, spectacular storytelling, and Tchaikovsky's enchanting score are all elements to be enjoyed.

As a choreographer, it is inspiring for me to revisit one of revered choreographer Marius Petipa's (1818–1910) masterpiece works with our Company dancers, as well

his powerful collaboration with composer Pyotr Ilyich Tchaikovsky. The architecture of this score, combined with the exquisite costumes designed by Peter Docherty make this ballet an unforgettable experience.

The Dancers and I are grateful you decided to spend your Mother's Day Weekend with us, and we look forward to seeing you next season.

Enjoy!

A handwritten signature in black ink that reads "Stephen Mills". The signature is fluid and cursive, with a large initial 'S'.

STEPHEN MILLS

Sarah & Ernest Butler Family Fund
Artistic Director

STEPHEN MILLS

Known for his innovative and collaborative choreographic projects, Stephen Mills has created over 60 premieres for Ballet Austin and has works in the repertoires of companies across the United States and around the world. His inaugural season as artistic director in 2000 attracted national attention with his world-premiere production of *Hamlet*, hailed by *Dance Magazine* as "... sleek and sophisticated." *The Washington Post* recognized Ballet Austin as "one of the nation's best kept ballet secrets" in 2004 after Mills' world premiere of *The Taming of the Shrew*, commissioned by and performed at the John F. Kennedy Center for the Performing Arts in Washington, D.C. The Company's first Kennedy Center invitation in January of 2002 was to perform Mills' *A Midsummer Night's Dream*. Ballet Austin presented a variety of Mills' works at The Joyce Theater (NYC) in 2005 and returned to the Kennedy Center in collaboration with The Suzanne Farrell Ballet in 2008 and for the Ballet Across America Festival in 2013. In 2005 after two years of extensive research, Mills led a communitywide human rights collaboration that culminated in the world premiere work *Light / The Holocaust & Humanity Project (Light)*. In 2006 *Light* was awarded the Audrey & Raymond Maislin Humanitarian Award by the Anti-Defamation League. The work made its international debut

in September 2013, with performances in three cities across Israel and is the subject of the award-winning documentary film, *FINDING LIGHT*. In October 2016, Mills led the company through a 16-city tour of the People's Republic of China, concluding in China's largest city, Shanghai. In 1998, Mills won the choreographic honor of representing the United States with his work, *Ashes*, at the Rencontres Chorégraphiques Internationales de Seine Saint-Denis in Paris. In 2004, his work *One/the body's grace* won the Steinberg Award, the top honor at le Festival des Arts de Saint-Sauveur International Choreographic Competition in Montreal. Mills' ballets are in the repertoires of Hong Kong Ballet, Ballet Augsburg, American Ballet Theatre Studio Company, Atlanta Ballet, Milwaukee Ballet, The Washington Ballet, Cuballet in Havana, Cuba, BalletMet Columbus, Dayton Ballet, Sarasota Ballet, Ballet Pacifica, Dallas Black Dance Theater, Louisville Ballet, Nashville Ballet, Colorado Ballet, Texas Ballet Theater, The Sacramento Ballet, Eugene Ballet, Oklahoma City Ballet, Pittsburgh Ballet Theatre and Dance Kaleidoscope. He has worked in collaboration with such luminaries as the eight-time Grammy Award-winning band Asleep at the Wheel, Shawn Colvin, visual artists Natalie Frank and Trenton Doyle Hancock, internationally renowned flamenco artist José Greco II, and composer

Graham Reynolds. In 2020, Mills collaborated with filmmaker, producer, and former company artist Paul Michael Bloodgood to create the dance film *Preludes/Beginnings* for which he received a 2021 Lone Star EMMY® Award. As a dancer, Mills performed with the world-renowned Harkness Ballet, The American Dance Machine under the direction of Lee Theodore, Cincinnati Ballet, and Indianapolis Ballet Theatre before becoming a part of Ballet Austin. Mills danced principal roles in the Balanchine repertoire, as well as works by ChooSan Goh, John Butler, Ohad Naharin, Vicente Nebrada, Domy Reiter-Soffer and Mark Dendy. In addition to his work as a choreographer, Mills is a master teacher committed to developing dancers. His invitations to teach include Jacob's Pillow, Goucher College, Booker T. Washington High School for the Performing Arts in Dallas, The Virginia School of the Arts, The New Orleans Center for the Creative Arts, Stephens College, Point Park University in Pittsburgh, Boca Ballet Theater, School of American Ballet, The Suzanne Farrell Ballet, Butler Ballet, Lyon Opera Ballet, and NW Professional Dance Project. Mills is a member of the national dance service organization Dance/USA and served both in leadership roles and on the national Board of Trustees for the organization. In 2013, he became a Fellow of the Chief Executive Program of National Arts Strategies.

The spirit of
ballet is found
in its people.

Join the community.



EN FACE
BALLET COLLECTION

EN FACE

BALLET COLLECTION

(ahn 'fahss) Position of the body
in which the dancer is facing
directly towards the audience.



Scan the QR code above to read
this magazine on your phone.

PUBLISHER + FOUNDER

Misty Tompoles

**ASSOCIATE PUBLISHER,
NATIONAL SALES &
REVENUE STRATEGY**

Katrina Markwick

CHIEF OF STAFF

Annabella Showerman

PROJECT MANAGERS

Chris Porras

Elsbeth Sweatman

SALES MANAGER

Kate Bramer

**ADVERTISING
SALES REPRESENTATIVES**

Heidi Bressler

Kathryn Frey

Michel Manzo

ART DIRECTOR

Heidi Rush

DESIGNERS

Michael Bellinger

Bonnie Dickerson

Jane Sanders

CONTENT MANAGER

Alanna Love

SUBSCRIBE ONLINE



Call to Advertise: 503.922.2110

Published by Rampant Creative, Inc.
©2024 Rampant Creative, Inc.

All rights reserved. This magazine or any
portion thereof may not be reproduced or
used in any manner whatsoever without the
expressed written permission of the publisher.
Rampant Creative, Inc./En Face Magazine

CREDITS

The Sleeping Beauty



CREDITS

CHOREOGRAPHY Marius Petipa, with additional dances by Stephen Mills

MUSIC Pyotr Ilyich Tchaikovsky

LIVE ACCOMPANIMENT Austin Symphony Orchestra

COSTUME & SET DESIGN Peter Docherty

LIGHTING DESIGN Erin Earle Fleming

PRODUCTION SPONSORS

JOSIE BRUNI
KNIGHT

DAVID
BOOTH

CLARA & PAUL
BANCROFT

*The Fifth Age of
Man Foundation*

**BOULETTE GOLDEN
& MARIN L.L.P.**



INDIVIDUAL PRODUCTION SPONSORS

Victoria Cheney
Ann & James Downing
Martha & Cliff Ernst
Jennifer Garcia

Winnie Law / DPR Construction
Jennene Mashburn
Nikelle S. Meade

Elizabeth V. Newman
Fern & Jerre Santini
Cathy & Dwight Thompson
Eva Womack



ba BALLETAUSTIN

24
25

SEASON

SEASON PACKAGES ON SALE NOW!

BALLETAUSTIN.ORG | 512.476.2163

ARTISTIC TEAM



COOKIE G. RUIZ, C.F.R.E.

Executive Director

Cookie Gregory Ruiz has more than 30 years of experience in the areas of strategic planning, organizational development and non-profit fund-raising/management. Since 2002, she has held the professional designation of Certified Fund Raising Executive (C.F.R.E.) by the Association of Fundraising Professionals. Her community honors include Austin Business Journal's "Profiles in Power" Award, Leadership Austin's Polly Scallorn Community Trustee Award, Austin Community Foundation's Beverly S. Sheffield Award for Excellence as a Nonprofit Executive, The American Red Cross' "Clara Barton Medal of Honor," Volunteer of the Year award for the Austin Independent School District, the Lone Star Girl Scout Council "Women of Distinction" Award, The Junior League of Austin's Volunteer Extraordinaire Award, and she was a 2016 Austin Arts Hall of Fame inductee. Ruiz served as the city-wide Chair of CreateAustin, was a City Council appointee to Imagine Austin's Citizen's Advisory Task Force, and is a graduate of the Austin's City Works Academy. As a graduate of Leadership Austin, she served four years on its Board of Directors. Ruiz is currently a member of the Board of Texans for the Arts, a member of the national Board of Directors of the Performing Arts Alliance, the Board of Directors of Housing Works Austin, and is a Fellow of The National Arts Strategies International Chief Executive Program. Ruiz serves as a speaker, facilitator and presenter for a variety of leadership conferences, including the National Conference on Community Leadership, the National Performing Arts Conference, American for the Arts Annual Convention, National Conference of Dance/USA, The Governor's Women's Business Leadership Forum and the Texas Commission on the Arts. In 1996 Ruiz joined the staff of Ballet Austin as Development Director, became General Manager in 1997 and Executive Director in 1999.



MICHELLE MARTIN

Associate Artistic Director

Michelle Martin had her early dance training at the Alberta Ballet School and danced professionally with the Alberta Ballet

Company, Indianapolis Ballet Theatre, Hartford Ballet and Ballet Austin. During her tenure with these companies she performed soloist and principal roles in a range of classical, contemporary and modern works. Martin's teaching credits include guest teaching engagements in Canada and across the nation, as well as five years on the faculty of Jordan College at Butler University in Indianapolis. Martin began her tenure with Ballet Austin in 1991 as a dancer with the Company and in 1992 she was appointed ballet mistress and curriculum director of the Academy. In 1999 she founded Ballet Austin TWO, Ballet Austin's apprentice program, followed by the Trainee Program (now the Butler Fellowship Program) in 2000. In addition to her work in the rehearsal studio, Martin supervises the curriculum and faculty of Ballet Austin Academy, designs arts education and audience engagement programs and writes grants. She has served on the Texas Commission on the Arts peer panels for Arts Education, and Music and Dance and has been a juror for the American Ballet Competition for the past nine years. Martin was the 2001 recipient of the Austin-Under-40 award for contributions in the area of Arts and Entertainment.



CHRISTOPHER SWAIM

Rehearsal Director

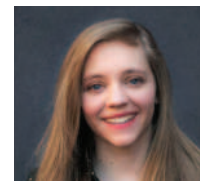
Christopher Swaim is originally from Bryant, Ark., where he began his training with Kirt and Linda Hathaway at the Academy of Ballet Arkansas. He then went on to graduate with distinction from the University of Oklahoma with a B.F.A. in Ballet Pedagogy. Swaim has danced a variety of soloist and principal roles across classical, contemporary, and modern repertory including works by Stephen Mills, George Balanchine, Twyla Tharp, Justin Peck, Annabelle Lopez Ochoa, Nicolo Fonte, Amy Seiwert, Ben Stevenson, Miguel Terekhov, Pam Tanowitz, Sidra Bell, and Septime Webre. While at Ballet Austin he had the pleasure of touring the globe, performing at the Kennedy Center in our nation's capital with The Suzanne Farrell Ballet and again with Ballet Across America III, and guesting with Ballet Arkansas and Amy Seiwert's company, Imagery. In May of 2019, he retired from the stage after 15 years with Ballet Austin as Albrecht in *Giselle*. Swaim teaches in the Ballet Austin Academy and has guest taught across the country.



BILL SHEFFIELD

Director of Production / Stage Manager

Bill Sheffield's long tenure with Ballet Austin extends back to the 1980s when he served as the first director of production for the organization. In 1990 Sheffield became the full time Production Manager of the historic Paramount Theatre. Sheffield rejoined the company as production stage manager in 2002 and added the duties as director of production in 2006. An Austin native, Sheffield also produced some of the summer musicals at Zilker Park, including the hits *Seven Brides for Seven Brothers*, *Annie Get Your Gun*, *Into the Woods*, and the award-winners *Crazy for You* and *Big River*. Sheffield formerly worked with the Austin Musical Theater, where he was stage manager for many of their productions. He has worked with many Austin arts groups, serving as stage manager, lighting designer or master electrician. Some of these groups include Austin Opera, Bruce Wood Dance, Dance Salad, Conspirare, Roy Lozano Ballet Folklorico, Zilker Theatre Productions, Austin Shakespeare Festival, Slavin-Nadal Dance, Austin Dance Ensemble, Austin Repertory Theatre, and Tapestry. More recently, Sheffield help found the Production Managers Affinity Group with Dance USA serving as its chair for two years.



ERIN FLEMING

Lighting Designer

Erin Earle Fleming is a NYC based lighting designer whose art illuminates the human experience through inclusive storytelling. Her work encompasses opera, dance, and plays across the United States. Her selected credits include: *Kiss* (Yale Repertory Theatre); *Tosca*, *The Medium* (Northern Lights Music Festival); *A Woman's Life* (Da Camera); *Xander Xyst*, *Dragon:1* (ArsNova ANT Fest); *Sweat, If Pretty Hurts Ugly Must Be a Muhfucka: An understanding of a West African Folktale*, *Tis Pity She's a Whore*, *Blood Wedding*, and *Macbeth* (Yale School of Drama); *The Feels...*(KMS), *Re:Union*, *MoonSong*, *Current Location*, *Kaspar* (Yale Cabaret); *Les Enfants Terribles* (Butler Opera Center); *Bus Stop, Love and Information* (Mary Moody Northern Theatre); *Pinocchio*, *ScienceTricks* (ZACH Theatre); *Bloody Bloody Andrew*

ARTISTIC TEAM & GUESTS

Jackson (Doctuh Mistuh Production); and *The Attic Space* (Palindrome Theatre). Erin also previously worked as the assistant production manger of Ballet Austin. She is the Resident Associate Lighting Designer at Texas Ballet Theatre and teaches at Mississippi State University. A native Texan, she holds a BA from St. Edward's University and an MFA from Yale School of Drama.



ALEXEY KORYGIN
Wardrobe Director

Alexey Korygin was born in Donetsk City, Ukraine. He earned a Master's Degree in Fine Arts from the Kiev State Ballet School of the Ukraine, and following his graduation in 1984, he danced with Donetsk State Academic Opera and Ballet Theater as a soloist and toured extensively throughout the USSR, Europe and United States. In 1992 after auditioning in New York, Korygin joined and danced for four seasons with Ballet Austin. At the same time, he began designing and building costumes for the company. In 1996, Korygin finished his dancing career

and assumed the position of Ballet Austin's wardrobe master. His costumes can be seen in Stephen Mills' *My Wall of Names and Bolero*, as well as *Lambros Lambrou's Remembrances, Lady of the Camellias, Evolution of An Angel: Part II, Homecoming*



CHELSEA MARIE RENNER
Guest Artist

Originally from Bozeman, Mont., Chelsea received her early training from Ann Bates of Montana Ballet and Campbell Midgley of Queen City Ballet. Her favorite principal roles include Cinderella in Stephen Mills' *Cinderella*, The Sugar Plum Fairy in Stephen Mills' *The Nutcracker*, Kate in Stephen Mills' *The Taming of the Shrew*, and Wendy in Paul Vasterling's *Peter Pan*. Chelsea was the first recipient of the Sarah and Ernest Butler Scholarship in 2006. Outside the studio, she loves spending her time with her son Landon, and husband Aaron. Chelsea would like to thank Aaron, her parents, sisters, and grandparents for their endless love and support. She will

be retiring from the stage this December, after her final *Nutcracker* performances. Chelsea would like to thank Stephen Mills and this wonderful organization for believing in her and being the place she got to live her childhood dreams, for 18 years!! A journey she will never forget!!



JULIUS TAIBER
Guest Artist

Born in Munich, Germany and raised in Greenville, SC, Julius began his early dance training at the International Ballet Academy at the age of 9. From 2014-2017, he trained at the Nutmeg Conservatory for the Arts and then with the Next Generation Ballet from 2017-2018. He then attended Houston Ballet Academy under the direction of Claudio Munoz where he was given the opportunity to perform in Stanton Welch's *Bruiser* and *The Nutcracker*, as well as Ben Stevenson's *Sleeping Beauty*. He has attended summer programs at Next Generation Ballet, Pacific Northwest Ballet, Ellison Ballet, Boston Ballet, and Houston Ballet.





PETER BAY
Conductor

Peter Bay became the Music Director and Conductor of the Austin Symphony Orchestra in 1998. He is also Conductor of the Big Sky Classical Festival Orchestra (MT). Maestro Bay has appeared with over eighty different orchestras including the National, Chicago, St. Louis, Houston, Dallas, Baltimore, New Jersey, North Carolina, San Antonio, Tucson, West Virginia, Colorado, Hawaii, Sarasota, Fort Worth, Bochum (Germany), Carinthian (Austria), Lithuanian National, and Ecuador National Symphonies, the Minnesota and Algarve (Portugal) Orchestras, the Louisiana, Buffalo, Arizona, Rhode Island

VIOLIN I

Jessica Mathaes
Mariama Alcantara
Sophie Verhaeghe
Zachariah Matteson
Paula Bird
Robin Burwell
Eugene Gratovich
Matt Lee

VIOLIN II

Ruth Chang
Helen Cooper
Georgeann Shockley
Sha Zhu
Richard Kilmer
Andrew Corral
Elise Winters

VIOLA

Bruce Williams
Martha Carapetyan
Emma Martin
Eugénie Edmonds
Stephen Buckles
Shawn Somerville

CELLO

Douglas Harvey
Anna Park
Matthew Armbruster
Erna Buckles
Margaret Coltman

BASS

Jonathan Rouse
Paul Determan
Scott Davis

FLUTE

Rachel Lopez
Nicholas Goodwin
Esther Fredrickson

OBOE

Julianne Webner
Jennifer Bernard
Stanley Chyi

CLARINET

Stephen Girko
Hilary Scop

and Boca del Rio (Mexico) Philharmonics, the St. Paul Chamber Orchestra, the Eastman Postcard from Morocco and Aspen he Ballad of Baby Doe Opera Theaters, and the Theater Chamber Players of the Kennedy Center. Summer music festival appearances have included Aspen and Music in the Mountains (CO), Grant Park and Ravinia (IL), Round Top (TX), OK Mozart (OK) and Skaneateles (NY). In June 2018 he led performances of Leonard Bernstein’s Mass as part of the Bernstein100Austin celebration.

Peter is the primary conductor for Ballet Austin. Other positions held by Bay have included Music Director of the Erie Philharmonic, Annapolis Symphony Orchestra, Breckenridge Music Festival (CO), Britt Festival Orchestra (OR), Hot Springs Music Festival (AR), and posts with the Rochester Philharmonic Orchestra. St. Paul Chamber Orchestra, and Richmond Symphony. Bay and the ASO with pianist Anton Nel released a critically acclaimed Bridge CD of Edward Burlingame Hill’s music. With the Richmond Symphony he recorded the U.S. premiere of Britten’s *The Sword in the Stone* for Opus One Records, and with the Rochester Philharmonic Orchestra Voices, featuring the percussion ensemble NEXUS. He is conductor for Christopher Cross’ *Secret Ladder* album and Hanan Townshend’s soundtrack to the 2016 movie *The Vessel*.

In 1994, he was one of two conductors selected to participate in the Leonard Bernstein American Conductors Program. He was the first prize winner of the 1980 Baltimore Symphony Orchestra Young Conductors Competition and a prize winner of the 1987 Leopold Stokowski Competition sponsored by the American Symphony Orchestra. In July 2012 he appeared in *Solo Symphony*, a choreographic work created for him by Allison Orr of Forklift Danceworks. He was inducted into the Austin Arts Hall of Fame in May 2016. Peter is married to soprano Mela Sarajane Dailey, and they have a son Colin.

BASSOON

William Lewis
Daniel Chrisman

FRENCH HORN

Tom Hale
Ed Tschoepe
Kurt Moede
Esteban Garcia

TRUMPET

Kyle Koronka
Timothy Shaffer
Wiff Rudd
Micah Killion

TROMBONE

Tyler Vahldick
Ryan Murray
Simon Lohmann

TUBA

Steve Curtis

TIMPANI

Tony Edwards

PERCUSSION

Genaro Gonzalez
Dick Berkley
Ian Fry

KEYBOARD

Alex Maynegre-Torra

HARP

Elaine Barber

CONDUCTOR

Peter Bay

STAFF

Sandra Culhane
Ali Verderber
Michael Danburg
Jessica Alberthal
Chase Gallmeier

The Sleeping Beauty

CREDITS

CHOREOGRAPHY Marius Petipa, with additional dances by Stephen Mills

MUSIC Pyotr Ilyich Tchaikovsky

LIVE ACCOMPANIMENT Austin Symphony Orchestra

COSTUME & SET DESIGN Peter Docherty

LIGHTING DESIGN Erin Earle Fleming

CAST

PROLOGUE

AURORA Dianetsy Rojas* / Katherine Deutch**

PRINCE DÉSIÉ Morgan Stillman* / James Fuller**

QUEEN Chelsea Marie Renner***

KING FLORESTAN James Fuller* / Morgan Stillman**

LILAC FAIRY Courtney Holland* / Grace Morton**

– FAIRIES –

CANDIDE Alyssa Manguiat

COULANTE Meg Kataoka

MIETTES QUI TOMBENT Sahel Flora Pascual

CANARI QUI CHANTE Isabella Phillips Lynch* / Vivien Farrell**

VIOLENTE Lexi Eicher

CAVALIERS Ian J. Bethany, Colin Canavan, Arnaldo Hernandez, Paul Martin, Jack Morris, Leighton Taylor

LILAC FAIRY ATTENDANTS Anika Crouser, Alexa Dollar, Celena Fornell, Katelyn Hagel, Isabelle Lapierre, Alexandra Owens

CARABOSSE Edward Carr

CARABOSSE CREATURES Tristin Filsinger, Colin Heino, Jordan Lovelace, Jackson Rankin

CATALABUTTE Julius Taiber***

NANNY Claire Sturgeon

COURTIERS Reagan Arenz, Carly Darnell, Katelyn Hagel, Isabelle Lapierre, Ava Tellier, Andrew Buckley, Kyawzwa Jeremy Lwin, Ezra Schenck

PAGES Kamryn Baker, Kaitlyn Crutchlow* / Scarlett Hanson**, Sose Johnson* / Nora Thompson**, Ona Murdoch, Theta Ng* / Dorothy Rodriguez**, Amelia Seibert* / Christine Li**

ACT I

GARLAND WALTZ Amelia Bednar* / Anika Crouser**, Alexa Dollar* / Celena Fornell**, Carly Darnell* / Katelyn Hagel**, Reagan Arenz* / Isabelle Lapierre**, Angelina Carbonaro* / Nya Tinio-Mitchell**, Alexandra Owens, Tristin Filsinger, Colin Heino, Jordan Lovelace* / Jackson Rankin**

SUITORS Colin Canavan, Arnaldo Hernandez, Jack Morris, Leighton Taylor

AURORA'S FRIENDS Lexi Eicher, Vivien Farrell, Meg Kataoka, Isabella Phillips Lynch, Alyssa Manguiat, Sahel Flora Pascual

(INTERMISSION)

ACT II

HUNTING PARTY Reagan Arenz, Amelia Bednar, Alexa Dollar, Alayna Hamade* / Elianna Price**, Claire Sturgeon, Ava Tellier, Tristin Filsinger, Colin Heino, Jordan Lovelace, Kyawzwa Jeremy Lwin, Jackson Rankin, Ezra Schenck

TUTOR Ian J. Bethany

COUNTESS Carly Darnell

VISION Anika Crouser, Lexi Eicher, Vivien Farrell, Celena Fornell, Katelyn Hagel, Meg Kataoka, Isabelle Lapierre, Isabella Phillips Lynch, Alyssa Manguiat, Alexandra Owens, Sahel Flora Pascual, Nya Tinio-Mitchell

(INTERMISSION)

ACT III

POLONAISE Reagan Arenz* / Isabelle Lapierre**, Amelia Bednar, Carly Darnell* / Katelyn Hagel**, Alexandra Owens, Tristin Filsinger, Colin Heino, Jordan Lovelace* / Jackson Rankin**, Jack Morris

PUSS 'N BOOTS AND THE WHITE CAT Paul Martin, Alyssa Manguiat

PRINCESS FLORINE AND BLUEBIRD Vivien Farrell* / Isabella Phillips Lynch**, Ezra Schenck* / Kyawzwa Jeremy Lwin**

LITTLE RED RIDING HOOD AND THE GREY WOLF Sahel Flora Pascual, Ian J. Bethany

Photo by Tony Spielberg



PROLOGUE

King Florestan and his Queen have welcomed their first child, Princess Aurora, and declare a grand christening ceremony to honor her. During the christening of Princess Aurora, several fairies are invited to the ceremony to bestow gifts on the child. Each fairy represents a virtue, such as beauty, courage, sweetness, musical ability, and mischief. The Lilac Fairy arrives. But before she can bestow her gift the palace grows dark. With a clap of thunder, the evil fairy Carabosse arrives with her minions. Carabosse is furious that she had not received an invitation to the christening and places a curse upon the baby princess: Aurora will grow up to be a beautiful, virtuous and delightful young lady, but on her sixteenth birthday she will prick her finger on a spindle and die. The King and Queen are horrified and beg Carabosse for mercy but she shows none. However, the Lilac Fairy intervenes. Though she does not have enough power to completely undo the curse, she alters it, allowing the spindle to cause a peaceful 100-year sleep for the princess, rather than death. At the end of those 100 years, she will be woken by the kiss of a handsome prince.

PAUSE

Photo by Tony Spielberg



ACT I

It is the day of Princess Aurora's sixteenth birthday. Celebrations are underway, though the King is still unsettled by Carabosse's omen. The townsfolk perform an elaborate dance with flower garlands, and Princess Aurora arrives afterward. Carefree and lovely, she is introduced to four suitors by her doting parents. Presently, a cloaked stranger appears and offers a gift to the princess: a spindle. Having never seen one before, Aurora curiously examines the strange object as her parents desperately try to intervene. As predicted, she pricks her finger. While initially appearing to recover quickly, she falls into a swoon and collapses. The cloaked stranger reveals herself to be Carabosse, who believes that her curse still stands and that the princess is dead. But the Lilac Fairy appears and reminds the King and Queen that Aurora is merely asleep. The princess is carried off to bed, and the Lilac Fairy casts a spell of slumber over the entire kingdom, which will only be broken when Aurora awakens.

INTERMISSION

ACT II

One hundred years later, Prince Désiré is at a hunting party with his companions. He is melancholy and his friends try to cheer him up. Still unhappy, he asks to be alone and the hunting party departs. In the forest he is met by the Lilac Fairy who shows him a vision of the beautiful princess, and the prince is immediately in love. Désiré begs to be taken to the princess. The Lilac Fairy takes him to the castle, and has him cut away the layers of vines with his sword. Carabosse appears and attempts to deter him, but he and the Lilac Fairy finally manage to defeat her. Once inside the castle, Désiré awakens Aurora with a kiss. The rest of the court wakes as well. The King and Queen heartily approve when the prince proposes marriage and the princess accepts.

INTERMISSION

ACT III

The royal wedding is underway. Guests include the Fairytale characters Puss in Boots and the White Cat, Princess Florine and the Bluebird, and Little Red Riding Hood and the Wolf. Aurora and Désiré perform a grand Pas de Deux, and the entire ensemble dances in celebration. The prince and princess are married, with the Lilac Fairy blessing the union.

THE COMPANY



IAN J. BETHANY

BA TWO: 2008–2009/
Joined Company:
2009

Ian was born in Brooklyn, N.Y. He has enjoyed dancing roles in Balanchine's *Agon*, *Allegro Brillante*, and *Rubies*, Lar Lubovitch's *Dvořák Serenade*, Stephen Mills' *Grimm Tales*, *A Midsummer Night's Dream* (Puck), *The Magic Flute*, *The Sleeping Beauty* (Bluebird), Septime Webre's *ALICE (in Wonderland)* (White Rabbit), Paul Vasterling's *Peter Pan* (Peter), and in works by Annabelle Lopez Ochoa, Nicolo Fonte, Jennifer Archibald and others. He has performed with ZACH Theatre, Entr'acte, Performa/Dance, Zilker Theatre Productions, and the Austin Opera. Ian has choreographed and taught for the Ballet Austin Academy, ZACH Theatre Pre-Professional Company, and other schools across the country.



ANDREW BUCKLEY

Joined Company:
2022

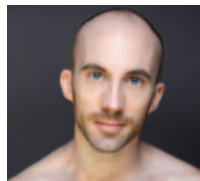
Andrew is originally from Philadelphia, PA. He started his ballet training in Berlin, Germany and began his pre-professional training at the School of Pennsylvania Ballet. Andrew continued training at Central Pennsylvania Youth Ballet with Marcia Dale Weary and Darla Hoover until he was accepted to the Professional Division Program at Pacific Northwest Ballet under the leadership of Peter Boal. There he trained with world renowned faculty and performed George Balanchine's *The Nutcracker* and *Diamonds*, as well as Jean Christopher Maillot's *Romeo et Juliette* and Kent Stowell's *Swan Lake*. Andrew has attended summer programs on scholarship at Pacific Northwest Ballet, School of American Ballet, Boston Ballet, Miami City Ballet, American Ballet Theater, Houston Ballet and Chautauqua Institution.



COLIN CANAVAN

Joined Company:
2022

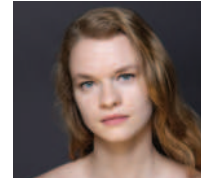
Colin is from Reading, MA. At age 15, he attended Walnut Hill School for the Arts in Natick, MA. Colin graduated from Indiana University's Jacob's School of Music in 2022 with a BS in Ballet Performance, Arts Management, and Human Resource Management. At IU, he has performed roles such as the principal in Donizetti Variations, Prince Siegfried in *Swan Lake*, Prince Charming in *Sasha Jane's Cinderella*, and corps roles in other Balanchine, Robbins, and Wheeldon works. Colin was one of eleven dancers chosen by Annabelle Lopez Ochoa to attend the Jacob's Pillow Contemporary Ballet Program in 2021.



EDWARD CARR

BA Trainee:
2006–2007 / BA TWO:
2007–2008 / Joined
Company: 2008

Growing up in Pittsburgh, Penn., Carr received his first 12 years of ballet training at the Pittsburgh Ballet Theater School. After graduating high school he continued his training at Canada's National Ballet School in Toronto. Since joining Ballet Austin he has been featured in Stephen Mills' *Light/The Holocaust and Humanity Project*, premiered as The Beast in Mills' *Belle REDUX / A Tale of Beauty & the Beast*, and has been featured in works by George Balanchine, Twyla Tharp, Lar Lubovitch, Pam Tanowitz, Pontus Lidberg, Nicolo Fonte, and Jennifer Hart. Carr was featured in visual artist Rodney McMillian's film *Untitled (neighbors)*, part of McMillian's first solo exhibition *Against a Civic Death* at The Contemporary Austin. He also serves as Associate Director to local contemporary dance company Performa/Dance, founded in 2014 by Carr and local choreographer Jennifer Hart, which continues to produce dance for the Austin scene and has been recognized with several Austin Critics Table Awards.



KATHERINE DEUTCH

BA TWO
2016–2018 / Joined
Company: 2018

Katherine is originally from St. Paul, Minnesota. She began her pre-professional training at Minnesota Dance Theatre before attending two winter terms at the School of American Ballet. Upon graduation, Katherine joined Ballet Austin as an apprentice and was promoted to the main company in 2018. Her most notable performances include soloist and principal roles in George Balanchine's *Rubies* and *Serenade*, Amy Seiwert's *Traveling Alone*, Jessica Lang's *Garden Blue*, Annabelle Lopez Ochoa's *Symbiotic Twin*, and the "survivor" in Stephen Mills' *Light/The Holocaust and Humanity Project*. She has danced Odette/Odile and the Sugar Plum Fairy in Stephen Mills' staging of *Swan Lake* and *The Nutcracker*. Katie is also a member of project-based company Performa/Dance, directed by Jennifer Hart.



LEXI EICHER

BA TWO:
2021–2023 / Joined
Company: 2023

Born in Fort Wayne, IN, Lexi began her ballet training at Project Ballet, instructed by Beth McLeish. She graduated from Indiana University's Jacobs School of Music in 2021, where she performed in works by Christopher Wheeldon, Jerome Robbins, Martha Graham, and George Balanchine. She joined Ballet Austin TWO in 2021 and performed lead roles in excerpts from *Paquita* and *Sleeping Beauty*. Lexi appeared in George Balanchine's *Serenade* as well as in Stephen Mills' *The Nutcracker*, *A Midsummer Night's Dream*, *Swan Lake*, and *Light* with the company before her promotion in 2023. She also teaches for Ballet Austin's Young Children's Division and Pre-Ballet classes.



VIVIEN FARRELL

Joined Company:
2020

Born and raised in the Green Mountains of Vermont, Vivien trained for 12 years with Vermont Ballet Theatre. She furthered her training in Miami City Ballet School's pre-professional division and spent an additional year at Central Pennsylvania Youth Ballet under the direction of Marcia Dale Weary. Prior to Ballet Austin, Vivien danced five seasons with Eugene Ballet. While there, she performed the roles of Clara in *The Nutcracker*, Love in Suzanne Haag's world premiere of *The Firebird*, and was most recently featured in Stephen Mills' *Hamlet* and Edwaard Liang's *Age of Innocence*.



TRISTIN FILSINGER

Joined Company:
2023

Tristin grew up primarily in Eureka, California. At age twelve, he was accepted into Boston Ballet School's Pre Professional program with a full merit scholarship. There, he trained under Peter Stark, Igor Burlack, and Margret Tracy among others before continuing his education at Butler University under full merit scholarship. At Butler, Tristin earned a BFA in dance and performed many roles as a part of Butler Ballet including the Nutcracker Prince, Snow King, the Pas de Trois from *Swan Lake*, and the Peasant Pas De Deux from *Giselle*. He also performed in world premieres from choreographers such as Patrick de Bana and Jennifer Archibald.

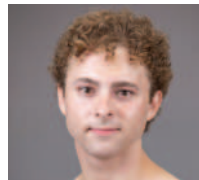


JAMES FULLER

Joined Company:
2010

James Fuller is from Irvine, CA, and was trained at Ballet Pacifica Conservatory. In 2004, James received a Youth America Grand Prix scholarship to study at the Boston Ballet School where he completed his final year of training. James apprenticed with Oregon Ballet Theatre for a year before enrolling at Harvard University. At Harvard,

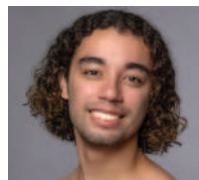
James performed works by Paul Taylor, Martha Graham, George Balanchine, and Alvin Ailey. In the summers, James studied modern dance with the Paul Taylor Dance Company, American Dance Festival, and Beijing LDTX. James directed the Harvard Ballet Company in 2009 and graduated in 2010 with a Bachelor of the Arts in Philosophy, a secondary field in dramatic arts, and a language citation in Urdu-Hindi. Since joining Ballet Austin, James has danced Tamino in *The Magic Flute*, Ivan in *The Firebird*, Albrecht in *Giselle*, and the final duet in Stephen Mill's *Four Mortal Men*.



COLIN HEINO

Joined Company:
2023

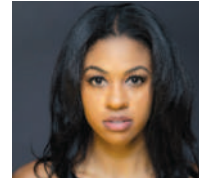
Originally, from Plainfield, Illinois, Colin graduated from the University of Southern California's Gloria Kaufman School of Dance in 2023, with a BFA in Dance. At USC, Colin performed featured roles in *Whereabouts Unknown* by Jiří Kylián, *In Creases* and *Rodeo* by Justin Peck, *Counterpoint* by Kyle Abraham, and corps roles in works by Ohad Naharin, William Forsythe, and more. Before attending USC, Colin trained at The Chicago Academy for the Arts and expanded his training by spending summers at the Jacob's Pillow Contemporary Ballet Program, the Royal Ballet School, the Joffrey Academy of Dance, the Pacific Northwest Ballet School, and the Juilliard School.



ARNALDO HERNANDEZ

BA TWO:
2020-2022 / Joined
Company: 2022

Arnaldo is from Bayamon, Puerto Rico, where he began training at Pasos Ballet Academy and The Conservatory of Ballet Concierto of Puerto Rico. He was later accepted to The Rock School for Dance Education where he performed in *Nutcracker 1776* as well as Gala and Fringe Festival showcases. He later joined Pennsylvania Ballet's second company and danced the pas de trois from *Paquita*, *Celtic Fire* and the pas de deux from *La Fille Mal Gardée*. He also appeared in company productions such as George Balanchine's *The Nutcracker*, Macmillan's *Romeo & Juliet*, Angel Corella's *La Bayadere* and Jerome Robbins' *Glass Pieces*.



COURTNEY HOLLAND

Joined Company:
2016

Originally from Toronto, Canada, Courtney began her professional training at age 11 at Canada's National Ballet School and graduated in 2010. She continued training at the Dance Theatre of Harlem. In 2012, she was a finalist at Valentina Kozlova International Ballet Competition. She received a scholarship to the Banff Centre's Professional Dance Program and appeared as a guest artist in the Arts Summer Festival performing George Balanchine's *Concerto Barocco* and Christopher Wheeldon's *Souvenirs*. In 2013, Courtney joined Charlotte Ballet II where she performed works by George Balanchine, Dwight Rhoden, Sasha Janes, Mark Diamond and Jean- Pierre Bonnefoux, and was featured in *The Nutcracker* and *Cinderella* (The Autumn Fairy), directed by Kennedy Center Honoree Patricia McBride. At Ballet Austin, Courtney has danced works by Stephen Mills, Septime Webre, Pam Tanowitz and Annabelle Lopez Ochoa. She enjoyed performing Justin Peck's *In Creases*, Annabelle Lopez Ochoa's *A deux* and was featured in Paul Vasterling's *Peter Pan* as 'Tinker Belle'.

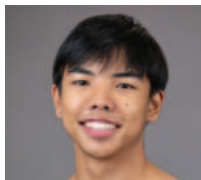


MEG KATAOKA

BA TWO:
2022-2023 / Joined
Company: 2023

Meg was born in New York and grew up in Japan. She started training with Tomoka Dance Studio. In 2016, she joined Pittsburgh Ballet Theatre School where she performed lead roles in Marius Petipa's *Paquita* and David Linchine's *Graduation Ball*. After two years with PBT, she went to Boston Ballet School where she performed in Miko Nissinen's *The Nutcracker*. In 2020, Meg joined Kansas City Ballet's second company. At KCB she performed various works including Balanchine's *Serenade* and Septime Webre's *Wizard of Oz*. She joined Ballet Austin TWO in 2022 and performed Aspirin Girls in *Serenade*, and in Stephen Mills' *The Nutcracker*, *I am the Monument*, *Light* and *Cinderella* before her promotion to the main company.

THE COMPANY



**KYAWZWA
JEREMY LWIN**

Joined Company:
2023

Born and raised in the San Francisco Bay Area, Kyawzwa began dancing at the Westlake School of Performing Arts at age 5. He continued his ballet training at City Ballet San Francisco under the direction of Mr. Nikolai Kabaniaev at age 15. Since then, he has performed lead roles in *The Nutcracker*, *Le Corsaire*, *Satanella*, and more in contemporary and neoclassical pieces. In 2020, he was awarded first place at YAGP San Francisco Semi-Final. In 2022, he attended YAGP finals in Tampa, Florida and was awarded 2nd place in Contemporary Pas de Deux category. He was also invited and participated in the prestigious Helsinki International Ballet Competition in Helsinki, Finland.



**ISABELLA
PHILLIPS LYNCH**

BA TWO: 2018–2021 /
Joined Company:
2021

Born in Fremont, California, Isabella trained at San Francisco Ballet. At 15 she continued at Ballet San Jose under Jose Manuel Carreno where she performed in the U.S. premiere of Alicia Alonso's *Giselle*. At 17 she joined The New Ballet Studio Company under Dalia Rawson Hughes. In fall 2017, she was a Trainee with Smuin Ballet. Summer training included Joffrey Ballet Chicago, National Ballet of Cuba's Yoira Esquivel Brito and Amparo Brito, and Ellison Ballet. Her Ballet Austin II credits include the Grand Pas from *Paquita*, Joshua Manculich's *Menagerie*, Jimmy Orrante's *Ugly Duckling*, and Stephen Mills' *The Nutcracker* and *Giselle*.

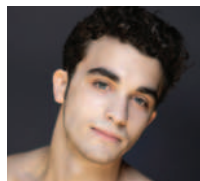


**ALYSSA
MANGUIAT**

Joined Company:
2021

Originally from Mason, Ohio, Alyssa received her training from Cincinnati Ballet Academy under the direction of Sarah Hairston from 2007-2017. At Cincinnati Ballet, she studied as a trainee, then joined their second company, and later joined their

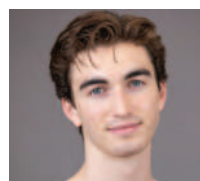
company as an apprentice. In 2021, she joined Ballet Austin as a company dancer and has performed works by Stephen Mills, Amy Seiwert, Jennifer Archibald, George Balanchine, and Jessica Lang. She has especially enjoyed performing roles such as the Waltz Girl in Balanchine's *Serenade*, Adam & Eve in Mills' *Light/The Holocaust and Humanity Project*, and the corps de ballet in Seiwert's *Traveling Alone*.



PAUL MARTIN

BA TWO: 2015–2017 /
Joined Company:
2017

Paul began his ballet and dance training in West Des Moines, Iowa, under the tutelage of Hank and Beth Adams. With their guidance, Paul earned scholarships to notable summer intensive programs, including Kansas City Ballet School, Nutmeg Conservatory, San Francisco Ballet School and Ballet Austin. In 2014, Paul received a scholarship to Kansas City Ballet School where he advanced his training, culminating in a performance opportunity with Kansas City Ballet II. As a Ballet Austin II apprentice, Paul performed lead roles, such as The Judge in Nick Kepley's *Season of Innocence* and The Prince in Nelly Van Bommel's *Snow White*. Additionally, he's performed in Jennifer Hart's *Spaces* and Stephen Mills' *Touch* and *The Nutcracker*.



JACK MORRIS

Joined Company:
2023

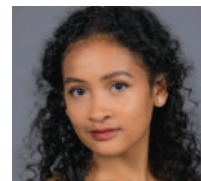
Jack Morris is from Pasadena, MD where he started his dance training at Jamz Dance Studio. In 2018, he enrolled at Baltimore School for the Arts where he received ballet training under the mentorship of Anton Wilson. In 2020, he continued to the School of American Ballet where he performed principal roles in George Balanchine's *Symphony in C* and *La Source* as well as featured roles in Jerome Robbins' *Glass Pieces*, *Four Seasons*, and *Goldberg Variations*. Jack has also performed with the New York City Ballet in their production of Peter Martin's *The Sleeping Beauty* and George Balanchine's *Garland Dance*.



GRACE MORTON

BA TWO:
2012–2013 / Joined
Company: 2013

Originally from Seattle, WA, Grace received her early training at Dance Fremont directed by Vivian Little and Mary Reardon. In 2010 she continued her study in Oregon Ballet Theater's professional division and joined Ballet Austin TWO in 2012. After joining the company in 2013, Grace has performed lead roles in Mills' *The Nutcracker* (Grand Pas, Snow Queen, and Marzipan), *Hamlet* (Ophelia), *Light / The Holocaust & Humanity Project*, *The Taming of the Shrew* (Bianca), *POE / A Tale of Madness* (Sissy, and Mother), *Carmina Burana*, *One/ the body's grace*, *I Am The Monument*, and *CARBON53*. She danced the pas de deux in George Balanchine's *Rubies*, *Serenade*, and *Concerto Barocco*. She's also danced works by James Gregg, Jennifer Hart, Gabriel Lamb, Pontus Lidberg, Lar Lubovitch, Annabelle Lopez Ochoa, Pam Tanowitz, and Christopher Wheeldon. Grace has danced for project-based company Performa/Dance and appeared in Zilker Theatre Production's presentation of *Oklahoma!* as Dream Laurie. In 2019, she performed Annabelle Lopez Ochoa's *Symbiotic Twin* at the *Jacob's Pillow* opening Gala.



**SAHEL FLORA
PASCUAL**

Joined Company:
2022

Growing up in the Philippines, Sahel started her dance training with Maritoni Tordesillas and later, Lisa Macuja-Elizalde and Osias Barossa at Ballet Manila. She continued at the School of American Ballet, performing featured roles in George Balanchine's *Emeralds*, *Divertimento No. 15*, *Valse Fantaisie*, *Symphony in C*, and Peter Martin's *Sleeping Beauty*. Sahel performed with the New York City Ballet in their 2022 Spring Gala and Stravinsky II Festival and originated featured roles with the New York Choreographic Institute. Sahel is also a student at Columbia University specializing in developmental and sociocultural psychology with a focus in dance pedagogy and an interest in choreography.

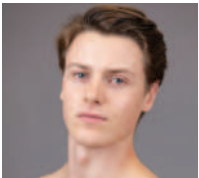
THE COMPANY



DIANETZY ROJAS

BA TWO:
2019–2021 / Joined
Company: 2021

Dianetsy is originally from Puerto Rico. Her early training began in Puerto Rico at Escuela Julian E. Blanco, Conservatorio de Ballet Concierto de Puerto Rico, and Escuela de Danza de Siglo 21 before being accepted to the School of American Ballet in 2016. At SAB she has performed works by George Balanchine, Justin Peck, William Forsythe, and Sofia Bianchi. Other performance experience includes *Don Quixote* with Ballet Concierto de Puerto Rico.



EZRA SCHENCK

Joined Company:
2023

Raised on a homestead in the mountains of Vermont, Ezra began dancing at a local studio as a child. He joined the Boston

Ballet School at age 15 and trained under Peter Stark for two years before moving to Florida to continue his training with the Sarasota Ballet School. Ezra spent three years in Sarasota where he had multiple works choreographed on him by guests Gemma Bond, Arcadian Broad, and resident choreographer Ricardo Graziano. He also danced in the corps de ballet for several company productions including *La Sylphide*, Kenneth MacMillan's *Elite Syncopations*, and George Balanchine's *Western Symphony*.

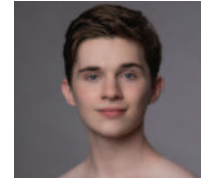


MORGAN STILLMAN

Joined Company:
2017

Morgan Stillman began his ballet training with Project Ballet in Fort Wayne, IN and attended Jacobs School of Music at Indiana University. In 2014 he joined Nevada Ballet Theatre and performed principal and soloist roles in works by James Canfield and George Balanchine. At Ballet Austin Morgan has danced principal roles in Mills' *Romeo*

& *Juliet*, *The Nutcracker*, *The Firebird*, and *Giselle*, and has been featured in works by Justin Peck and Annabelle Lopez Ochoa.



LEIGHTON TAYLOR

Joined Company:
2021

Born in Charlotte, NC, Leighton started training at Charlotte Ballet Academy at age 8. At 15 he relocated to train at International Ballet Academy under director Christina Fannéy and with teachers Nadia Pavlenko & Maxim Ponomarenko. There Leighton performed Cavalier in *The Nutcracker* and Colas in *La Fille Mal Gardée*. In 2018, he joined Boston Ballet School as a trainee, performing in *Konservatoriet* with the school and with the company in Mikko Nissinen's *The Nutcracker*, Balanchine's *Coppelia*, and Frederick Ashton's *Cinderella*. In 2020 Leighton joined Boston Ballet II and performed works by Petipa, Peter Stark, and Artist My'kal Stromile.

BALLET AUSTIN TWO + BUTLER FELLOWS



Endowed by Sarah and Ernest Butler
through the Ballet Austin Foundation



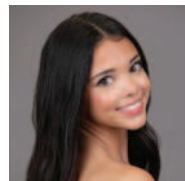
ANIKA CROUSER
Columbus, OH



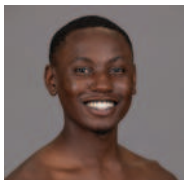
CELENA FORNELL
Seattle, WA



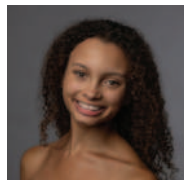
KATELYN HAGEL
Ridgewood, NJ



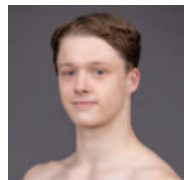
ISABELLE LAPIERE
Columbus, OH



JORDAN LOVELACE
Dallas, TX



ALEXANDRA OWENS
Wichita, KS



JACKSON RANKIN
Fayetteville, AR



Endowed by Sarah and Ernest Butler
through the Ballet Austin Foundation

REAGAN ARENZ
Houston, TX

ALAYNA HAMADE
Austin, TX

AMELIA BEDNAR
Stillwater, MN

NYA TINIO-MITCHELL
Austin, TX

ANGELINA CARBONARO
Clearwater, FL

ELIANNA PRICE
Rochester, NY

CARLY DARNELL
Beavercreek, OH

CLAIRE STURGEON
Cincinnati, OH

ALEXA DOLLAR
Los Angeles, CA

AVA TELLIER
Minnetonka, MN

CELEBRATING JAMES FULLER

“ I always feel a little melancholy when a dancer I have worked with and admired decides to stop dancing. Of course, I understand there is a limited cycle to this career path but it is still the same for me. This is certainly the case with James Fuller. I have watched him grow through his career as a dancer, teacher, dance maker and thought leader. We have toured the world together sharing the mission of Ballet Austin far and wide. James is kind, generous and thoughtful both inside and outside the studio. While sad to let him go, we look forward to watching the new chapter of James' life and the positive change he will create.”

—Stephen Mills, Artistic Director



ba BALLETAUSTIN

BELLE
A TALE OF BEAUTY & THE BEAST
SEPT. 27-29

The Nutcracker
62ND ANNUAL PRODUCTION
DEC. 6-23

HEART'S DESIRE
THREE EXCEPTIONAL DANCES
FEB. 14-16

Love's Gentle Spring
TWO NEW DANCES BY STEPHEN MILLS
MAR. 28-30

Romeo & Juliet
MAY 9-11

24-25
SEASON



DANCERS *GROW HERE*

ENROLL TODAY!

AGES 18 MONTHS TO 18 YEARS



BALLETAUSTIN.ORG/ACADEMY | REGISTRAR: 512.501.8703

BOARD OF DIRECTORS

MANAGEMENT COMMITTEE

PRESIDENT

Sly Majid

CHAIR

Sarah Butler

IMMEDIATE PAST-PRESIDENT

Edie Rogat

TREASURER

Tom Welch

SECRETARY

Dr. Joaquin Delgado

LONG CENTER LIAISON

Alexander C. Ladage

AT-LARGE MEMBERS

Daniel Byrne Everett Plante
Nora Linares-Moeller Mireya Zapata

CHAIR EMERITUS

Jare Smith

Sofia Avila
Grae Baker
Joanne Bal
Becky Beaver
Nikki Bryant
W. Andrew Buchholz, M.D.
Greg Casas
Socar Chatmon-Thomas
Ryan Coaxum
Jeffrey P. Coddington
Ada Corral
Priscilla Guajardo Cortez
Kristen Castleman Day
Zahie El Kouri
Cliff Ernst
Cynthia D. Fresch
Montse Fuentes
Renée Gallagher
Jennifer Garcia, PE, CFM
Wade Giles
Richard J. Groos
Jennifer Guthrie
Serena Hicks
E.D. Hill
Chris Hosek
Jon Ivester
Janette Keating
Winnie W. Law
Ana-Barbara Llorente

Jennene Mashburn
Judy Matula
Nikelle S. Meade
Virginia Miracle
Emily Moreland
Meeta Awasthi Morrison
Nidhi Nakra
Elizabeth V. Newman
Melissa Perez
Charles A. Phillips
Elizabeth T. Powdrill
Forrest Preece
Deanna Rankin
Ryann Reaud
Andrew Roth
Cord Shiftlet
Jade M. Shopp
Janice L. Ta
Sarah Teten
Judge George C. Thomas
Cathy Thompson
Natasia Valocchi
Dr. Melva K. Wallace
David Webber
Thea Whalen
Aisha White, M.D.
Jason R. Wills
Samantha Wiseman
Scott G. Yarborough

THE SLEEPING BEAUTY QUIZ

HOW MUCH DO YOU *REALLY* KNOW?



EN FACE
QUIZZES



SCAN THE
QR CODE TO
TEST YOUR
KNOWLEDGE!



THANK YOU TO OUR 2023/24 SEASON SPONSORS

Season Underwriter



STEPHEN MILLS' HAMLET DRS. JOANN HUNTER JOHNSON & KENNETH JOHNSON		THE NUTCRACKER H-E-B Helping Here StDavid's HEALTHCARE		MORELAND PROPERTIES	BALLETAUSTIN GUILD	ubeo BUSINESS SERVICES
TRIAD: THREE BOLD DANCES KODOSKY FAMILY FOUNDATION BUBBLEGUM Commissioned by DR. ROSANNE BUTERA, CHIROPRACTOR		STEPHEN MILLS' POE / A TALE OF MADNESS butler NEWCHOREOGRAPHY ENDOWMENT The Bancroft Initiative Texas Commission on the Arts		SARAH & ERNEST BUTLER	VIRTIGO PICTURES	ECPR TEXAS MARRIOTT AUSTIN DOWNTOWN
THE SLEEPING BEAUTY JOSIE BRUNI KNIGHT DAVID BOOTH CLARA & PAUL BANCROFT The Fifth Age of Man Foundation BOULETTE GOLDEN & MARIN L.L.P.					PR AGENCY SPONSOR MAXWELL LOCKE & BITTNER ECPR TEXAS	
OFFICIAL PROGRAM SPONSOR EN FACE BALLET COLLECTION		BALLET-O-MANIA! THE JUNIOR LEAGUE OF AUSTIN Community Project 2023-2024		HOSPITALITY PARTNERS TWIN LIQUORS FINE WINE & SPIRITS Whim HOSPITALITY AUSTIN catering PRISBY STEMS POINT		
FOOTLIGHTS PNC	NIGHT OF COMMUNITY THE REAUD CHARITABLE FOUNDATION SE SEAWELL ELAM FOUNDATION		Texas Capital	CapMetro	GOVERNMENT Texas Commission on the Arts	
EDUCATION PROGRAMS Underwriter POWELL FOUNDATION Google Bank of America 3M						
THE NUTCRACKER SCHOOL SHOWS H-E-B Helping Here	PETER & THE WOLF SCHOOL SHOWS APPLIED MATERIALS FOUNDATION		EDUMOVES Texas Commission on the Arts		MICHAEL & ALICE KUHN FOUNDATION	
PINK PILATES TEXAS ONCOLOGY More breakthroughs. More victories.	GET FIT! 2024 H-E-B Helping Here		ACTIVE AGING AgingWell A Division of the South Foundation Communities		ABC HOME & COMMERCIAL SERVICES	
OTHER SPONSORS TEXAS ECONOMIC DEVELOPMENT OFFICE movability GOODNIGHT RANCH HOUSING AUTHORITY OF THE CITY OF AUSTIN Bringing Opportunity Home kasa LIBRARY INTERIORS OF TEXAS						

OTHER CORPORATE, FOUNDATION & IN-KIND SUPPORT

Albertson's Safeway, AmazonSmile Foundation, Anderson's Coffee, Blue Whale Moving Company, Colleen's Kitchen, Goodcoin Foundation, Lily Pulitzer, Magnify Electric, Trudy Foundation, Watkins Insurance

ANNUAL CAMPAIGN DONORS

Thank you! We would like to recognize the generosity and support of the individuals who help make the 2023/24 season possible. Listing reflects donations as of March 26, 2023—March 26, 2024

\$200,000+

Ballet Austin Foundation

\$100,000+

Ballet Austin Guild

PREMIER FOUNDERS \$20,000+

Clara & Paul Bancroft
David Booth
Dr. Rosanne Butera,
Chiropractor
Sarah & Ernest Butler
The Fifth Age of Man
Foundation
Drs. JoAnn Hunter Johnson
& Kenneth Johnson
Janette & Patrick Keating
Josie Bruni Knight
Kodosky Family Foundation

PREFERRED FOUNDERS \$10,000+

Virginia & Gilbert Burciaga
Dr. Beverly Dale
Renee Gallagher &
Jason Pennington
Jennifer Garcia
Jennene Mashburn
Rosie & Roger Oberg
Gerard & Sissi O'Reilly
Liana & Arjun Rao
Edie Rogat &
Cotter Cunningham
Cathy & Dwight Thompson

FOUNDERS \$7,500+

John-Michael &
Priscilla G. Cortez
Hollis & Robert Gaston
The Norrod Family
Charles A. Phillips
Linda Ball & Forrest Preece
Anita & Oscar Rios
Carolyn & Marc Seriff

PREMIER PARTNERS \$5,000+

In Memory of Gregory Hild
Becky Beaver
Nikki Bryant Irion & Terry Irion
Chris Cheever
Jeffrey P. Coddington
Heather Crenshaw-Petkovsek,
in Honor of Jerry Conn
Emily & Ryan Deiss
Dr. Joaquin Delgado
Ann & James Downing
Doug Eicher & Bonnie Mills
Martha & Cliff Ernst
Nancy Fitzpatrick
Claudia Geoly &
José Pérez Zamarron
Wade Giles & Jeffrey Schab
Jeremy Guiberteau &
Dan Jackson
Jennifer Guthrie
Georgia & Don Henrich

Serena Hicks
The Joseph Hill Family
Joy & Gregory Hodgson
Chandra & Chris Hosek
Kathie & Spike Jones
Craig & Peggy Kuglen
Alexander C. Ladage
Winnie Law/ DPR
Construction
The Marakovic Family
Judy & Michael Matula
Nikelle S. Meade
Emily Moreland
Drs. Cathy & Rodney Nairn
Dr. Tanuj & Nidhi Nakra
Katie & Jesse Newland
Elizabeth V. Newman
& Isabelle C. R.
Melissa Perez & Paul Rashidi
Wanda A. Reynolds
Naleah & Josh Ryg
Jenna Salwen
Fern & Jerre Santini
Colby Simpson &
Lauren Cunningham
Jare Smith
Lonnie Karotkin Taub
& Albert Taub
Judge George C. Thomas
& Jolsna John Thomas
David Webber &
Ransom Baldasare
Tom & Sally Welch
The Wills Family
Samantha & Patrick Wiseman
Eva Womack

PRINCIPAL PARTNERS \$3,500+

Sofía Avila
Grae Baker & Nicole Carosella
Joanne Bal &
Gnana Selvadurai
Sara & Mark Brinton
Andrew & Elizabeth Buchholz
Darlene & Daniel H. Byrne
Mary & Greg Casas
Socar Chatmon-Thomas
Victoria Cheney
Ryan & Laura Coaxum
Ada Corral & Matthew Ames
Gretchen Gregory Davis,
In honor of
Cookie Gregory Ruiz
Aaron & Kristen Day
Zahie El Kouri & John
Greenman
The Fagan Family
Montse Fuentes &
Tom Patterson
Joani & Richard Groos
Jo & Jon Ivester
Nora Linares-Moeller
& Mike Moeller
Andrew Roth & Kevin Little
Ana-Barbara Llorente
Sly Majid & Rachel Loebel
Julia Marsden

Virginia & Jed Miracle
Claudia Becerra &
Patrick Montgomery
Dr. Robert J. Morrison &
Meeta A. Morrison
Suzanne & Norman Myers
Alicia & Robert Nellis
Mandy & Everett Plante
Elizabeth & Brent Powdrill
Deanna & Marc Rankin
Ryann & Jorge Rangel
Cookie & Phil Ruiz
Carol & Frank Sheppard
Annie & Cord Shiflet
Jade & Masa Shopp
Lauren Simpson Corbett
Stephanie Steenstrup
& Jonathan Vo
Janice Ta & John Beavers
Sarah & William Teten
Natasa & Michael Valocchi
Melva K. Wallace
Betty Marie Welch
Polly & Jay Westbrook
Aisha White
Wiatrek Family
Sarah & Scott Yarborough
Mireya Zapata

PREFERRED PARTNERS \$2,500+

Anonymous (2)
Steve Adler & Diane T. Land
Dr. Maureen Alexander
Grace & Jesse Ander
Suzanne Deal Booter
Ray & Karen Brimble
Drs. Robert & Cheryl Butler
Jessie & Bret Curtis
Tres Davis & Paul Rogers
David A. & Constance B. Elko
Cynthia D. Fresch
James & Sally Gavin
Iris Groten
David L. Harrington
Becky & Richard Herrington
Andrew Hudson
Marta Karpan Mattox
Catherine Leon-Parker
Melanie Lewis
Chris Long & David Smith
Jessica Lunsford &
Joseph Heilig
Desiree & Phil Lynch
Jeff Mace
Alex Manoogian
Mollie McDonnold
Candice & Clayton McKay
Anne & John McKinnerney
David, Teresa, &
Elizabeth Meade
Mona & James Morgan
Rick Morrow & Mark Jones
James Popp
Gail & Bill Romney
Nancy Scanlan
Danny Snyder
Valerie & Craig Tyler

Connie & Dan Weaver
Stephanie & Bill Whitehurst

PARTNERS \$1,500+

In Honor of Patricia Walker
KR Barron
Casey Blass & Lee Manford
Paula & Bob Boldt
David Boswell
Michaela Botha
Myra & Blaine Bull
Dr. Alan Carsrud &
Danny Babineaux
Colin & Jennifer Chapman
Jerry Conn
Barbette & John Cooper,
In Honor of Blake Cooper
Barbara & Alan Cox
Beth & Mark Domel
Thomas Edwards
Rose & Carey Epps
Yohan Faulk &
Dolina Logan Faulk
Lori & Alan Freedman
Lorrie & Carlos Garcia
Debra Haas & Marty Hood
Karen Hansen
Dr. Brent Hasty &
Stephen Mills
Sean & Teresa Henry
Jodi & Rocky Holland
Pat & John Ireland
Paula & Parker Jameson
Jacqueline & Kevin Johnson
Scott Joslove, Texas Hotel
& Lodging Association
Kelley & Carol Knutson
Dana & Daryl Kunik
Nancy & John Loftis
Flo & Ren MacNary
James Martin & Sky Benson
Linda McDavitt
Suzanne & John McFarlane
Jeff & Tracy Miller
Dr. Jennifer Millspaugh &
Sidney Millspaugh III
Chris & Quenby Mitchell
Judy Morris
Martha & Karl Nalepa
Betty & Charles Oltorf
The Pacey Family Foundation
Mark & Vicki Parsons
Jane Webre & David Plaut
Coralie & Jim Pledger
Leanne Raesener
Shalini Ramanathan &
Chris Tomlinson
Amy & Ken Rogat
James Saavedra
Edward Z. Safady
The Seach Family
Allison Smith Rudnick
Charlotte A. Smith
Snead Family Foundation
Karen Sonleitner
Ingrid & Eric Sprangle
The Steen Family
Nicole & Adam Swies

Maria L. Talamo &
Patrick S. Murphy
Shannon & Clare Taylor
Carolyn & Eric Thompson
Suzanne Tomlin
J. Craig Wallace
The Wilcox Family
Hilary & Stan Young

CORPS \$1,000+

Anonymous (2)
In Honor of Emma Reiss
In Memory of Carol Rivera
In Memory of Joyce Black
Victoria Avila
Juliana & Bryan Azar
Mark Berman & Josie Howard
Rena Bitter
Rosalie & Jim Boldin
Jodi, Rusty, & Rhys Boyer
Mark Weiss & Janet Bray
Molly Bray
Marisa & Jim Bushee
Jim Carter
Lynn Carter & Alan Moore
Caroline Caven, In memory
of Chuy Caven
Tana & Joe Christie
Paula Jean Cipollone
Rachel & Jeffrey Cloyd
Mary Creecy, In honor
of Millie Chen
Stacia Crescenzi
Reji DiNicola
Dorothy Drummer
& Greg Eden
Susan & Claude Ducloux
James & Kristine Eskew
Alice Fuller
Martha Garcia Barragan
& Juan Barragan
Kelvon Hansen & Neil Ely,
In honor of Frank Shott
Miss Havisham
J. Hogan & L. Biggar
Brooke & Levi Holmes
Natalie & Pete Hudson
Ken Hyle
Elizabeth & Harold Ingersoll
Susie & Pat Kelly
Renee & Robert Kerr
Patrick Landrum
Marie & Christophe Largilliere
Christi Cuellar Lotz
& David Lotz
Mari & Greg Marchbanks
Veronica & Ryan McDonald
James Meecker
Alexandra Morales
Kay & Eric Moreland, In
Honor of Emily Moreland
Michael & Tiffany Nels
Kim & Ryan Pitylak
Sofie Pompa
Trish Roach & Rob Martin
Rachel Robinson, In honor
of Ethan Robinson

ANNUAL CAMPAIGN DONORS

Leslie & George Rodgers, In Honor of Lucy Record
 Elizabeth & Anthony Siela
 Charles & Carole Sikes
 Philip Spertus
 Julie Springer
 Thomas W. Stephenson & Family
 Lauren & Daniel Thompson
 Heather Traeger & Jeff Cohan
 William Austin Tunstill III
 Jordan Walker
 Donald R. Wertz
 Patrick & Audrey White
 Alex Wolfe
 Carol Wood
 Andrea & Josh Woodruff
 Lital & Arik Yaacob

CONTRIBUTORS \$500+

Anonymous (3)
 In Honor of Sarah & Ernest Butler
 In Memory of Walter E. & Betty Boyd Foster
 In memory of Paula Marcallino & In honor of Nya Mitchell
 Jim & Debbie Alsup
 Nathan & Andrea Andrews
 Art & Kylie Arias
 Bandera Family
 Tracey Becken & William Drake
 Rachel & Bill Blackstone
 The Brannen Family
 Leslie Browder
 Laura Catania
 F. J. Cheff & Sharon Shuppert
 Cline Family
 Larry Connelly
 Kevin & Jennifer Coyle
 Allison Dow
 Joe A. Draker
 Stacy & Richard Dunavan
 Janet R. Eaddy
 Jill B. Fatzer
 Gene & Kristen Fojtik
 Mark Gagnon
 Michelle George
 Shelby Goodrum
 Jennifer & Scott Gordon
 Susan Gorishek
 Adriana & Jonathan Graf
 Kevin & Laura Gupton
 Karen Hagedorn
 Louise & Scott Haigler
 Marilyn Halpin
 Handwerker Family
 Jeff Harper & Mark Seeger
 Kathleen Hausenfluck
 Sharon & Ken Herman
 Margaret Herman
 Garrett C. Higley
 Blake & Joan Holman

Tyresse Horne & Francois Waelbroeck
 Ammad Jilani
 Krystin & Mike Johnson
 Doug & Tori Jones
 Mark Kernan
 Jan Knox
 Emily & James Kochanski
 Pilar Korgel
 Myra Leo & Billy Atkins
 Traci & Kevin Lepak
 Nora Levesque
 Krystal Lewis & Graham Heck
 Kathleen Irvin Loughlin
 Jessica Love & Mike Brogioli
 Michelle Martin
 Kelly & Lizzy Mattson Hankins
 Laurence McCullough & Linda Quintanilla
 R. John & Melanie Miner
 Michele & Chris Mitchell
 Gordon Moore & Alexis Simon Moore
 Heather Mullins
 Maureen Mulrooney
 Charlene & Thomas Noble
 Janice Omadeke
 MaryEllen O'Neil
 Dorothy Overbey & Mac Prible
 Michael Owen
 Bill Piner
 Milton & Shunne Powell
 Ethan Price & Lauren Blair
 Rick & Rhonda Ravel
 Rachel Rehwinkel
 Daniel E. Rodriguez
 Aysegul Sahin
 Deena & Mike Santori
 Chris Scheetz
 Jennifer & Kirk Schell
 Viada & Gennadi Sheber
 Amanda Simpson
 Dale & Stephen Sonnenberg,
 In Honor of Vicki Parsons
 Phillip & Kelle Soucier
 Patrick & Jessica Starley
 Kate Stoker
 Araceli Tapia
 David & Juliet Tapia
 Marian Louise Templin
 Bill & Mary Throop
 Sue & Terry Tottenham
 Kay Tyler - In honor of William Tunstill
 Virginia Urban
 Laura Villagran Johnson & Chris Johnson
 Shan Wang & Travis Owens
 Thea & Brock Whalen
 Karen & Andrew White
 Drs. Susan & Bill White
 Sherry & Richard Wilkison
 Vance Wilsonmay
 Karlan & Cam Witt
 Ben Woods
 Doak & Lexie Worley
 Jeriad & Jennifer Zoghby

SUPPORTERS \$250+

Anonymous
 In Honor of Deacon & Harper Henrichs
 Lisa Ameel
 Tina Austinson
 Mr. Darnese A. Bell, Jr.
 Beth Bergen & Jay Weiner
 Marybeth & Tom Bolerjack
 Flannery Bope
 Joe & Cassandra Brecht
 Dianne Brown
 Michelle & Marco Camacho
 Yang Cao
 Martin & Dolores Cuellar
 David de la Pena
 Antonio & Katherine de la Pena
 Lanelle Deardorf
 Ashley Del Bello
 Linda DeMayo
 The Dougherty Family
 The Egger Family
 Keelyn & Becky Ericson
 Amy Estes
 Deborah Evans
 Leanne & Michael Flatter
 For Kids' Sake
 Tammy Fotinos
 Dan & Jacque Fowler
 Dr. Robert & Sherrie Frachtman, In Honor of Cookie Ruiz
 Claudia & Glenn Garvey
 Laurie Gharis
 Kelsey Gibson
 Dawn R. Ginestra
 Priscilla Gonzales
 Ann S. Graham & Arlen Johnson
 David Carr & Anne Jane Gray
 Joel & Jessica Harper
 Kimberly Harrison & Roger De Leon
 Brian & Rose Hensley
 Allison Holland
 Stephanie Snyder & Michael Ikeya
 Jake Jensen & Stacey Faulkner
 Kevin Jickling
 Allegra Johnson
 Kellye King
 Sandra Littlejohn
 Thomas Lutazi & Richard Kahn
 Lorn MacDougal
 Jane-Elizabeth Madison
 Bart Martinec
 Sarah & Lucy Martinez
 Ricky & Laura Matz
 Chuck Michalik
 Vanessa McElwrath
 Jodi Medlock
 Anna Meyerson
 Susan Morehead
 Melanie & Peter Mullan
 Kathi Murphy

Kilyong Natho
 Patrick O'Neill & Jennifer Coffee O'Neill
 Cynthia Pedigo
 Virginia Phillips
 Joan & Kamy Pinkham
 Nancy & Mark Pollard
 Carol Rains
 Nancy Lee Ruyter
 Anna Salguero
 Elisa Salinas
 Lisa & Orlando Saucedo
 Gisele Schaefer & Kristiana Schaefer
 Amandine Schaeffer
 Michelle Schumann & Matt Orem
 David & Susan Sheppard
 Rich & Celina Skeen
 Brad & Lynne Stein
 Tucker Stipe
 Stephanie Stephens
 Lori Strong
 Brooke & Laramie Stroud
 Ali Tabrizi & Dona Avery Tabrizi
 Vickie & Rex Taylor
 Trisa Thompson & Jack Jacobi
 Erma Torres
 Suzon Tropez Holmes
 Ben & Barb Truskoski
 Yasaswy Valiveti
 Michael Walters
 Anne Walthall
 Richard Webster
 Maggie Wofford
 Dr. Janet Yen

PATRONS \$100+

Anonymous (14)
 In Honor of Olivia Devey
 In honor of Grace Harrell
 In Honor of Annalise Noria
 Felicia Adams
 Julia Ainzmeister
 Leah Marie Alden
 Eugene Alvarez
 Julyyya Alvarez
 Stephen Bagwell
 Guillermo & Jennifer Basualdo
 Frank Bean
 Brian & Patience Beck
 Sidnee, Savannah, Michelle, & Xavier Bell
 Dana Beyert & Dave Jones
 Hans & Jillian Box
 Shannon & Collin Bland
 Peggy E. Bradley
 Uanny Brens
 John Bretz
 Missy & Lynn Butler
 Sloan Byerly & Alexandra Lindley
 Campbell Family
 Monica & Ruben Campos Araoz

Deborah Casati
 Miranda Cave
 Lee Chapman
 Byran Chock
 Ali & Sam Clare
 Michael & Robin Clark
 Matthew & Ashlee Coffel
 Dr. Minas & Mrs. Melissa Constantinides
 Alessandra Correa
 Leslie Cox & Duane Sanford, In Memory of Alexei Bauereis
 Michael Cox
 Brandon & Kaycee Crisp
 Ken & Betsy Davis
 Beth & Andy Deck
 Janet Declue
 Paul & Lisa Delacruz
 Rachel & Sara Derr
 Sharon Dockery
 Leslie N. Durand
 Lee Elizer
 Dr. Yvonne A. Essandoh
 Debi & James Evans
 Neal Falgoust
 Mary Fernandez
 Edie Finch
 Laura Galt
 Joel & Regina Goldstein
 Wendy George
 Lois & Ira Goodman
 Carla & Douglas Greenleaf
 Becky & Wayne Gregory
 Kat Griffith
 Joanne Hanifan
 Linnie & Lora Harness
 Jay Henry & Marc Cote
 Tiburzcio Herrera
 Frankie Hickson
 Michele Hildrum
 Marsha Hoffer
 Jim & Susan Houchins
 Dr. Jennifer Hritz
 Keith & Carolyn Husbands
 Nathan Idais
 Dr. Aruna Jahoor & Amara Nemanich
 James Jeffries
 Alyssa Johnson
 Kathryn Judge
 Dr. Anil & Kristina Kashyap
 Emily Keating & Zander Smith
 Lori Keller & Jason Weiner
 Harris Ker
 Ashley Kocurek
 Pat Kopychak
 Nellie & Connor Kriegshauser
 Stuart Langham
 David & Melanie Larson
 Ann Laubach
 SarahNelle, dancer and poet
 Jessica & Andrew Lee
 Julie LeFebvre
 Andrea Lember
 Georgia Levin
 Kira & Chris Lombardi
 Heather Long

ANNUAL CAMPAIGN DONORS

Mary Lovell
 Ryan & Cheryl MacDonald
 Sarah Mackey &
 Thomas Madden
 Heather Kae Marshall
 Elizabeth & Travis McCormick
 David & Mary McDonald
 Katrina Elizabeth Meredith
 Jason Meeker
 Kimberly & Scott Meier
 Kim Merritt
 Joseph & Daniella Midura
 Maggi & Belle Miller
 Steven Mitchell
 Suzanne Mitchell
 Nancy & Leo Mueller
 Judith Munyon
 Edna Nation
 Drs. Dean &
 Marlowe Niemeyer
 Leslie Noble & Chris Brown
 Bridget O'Brien
 Oropeza Blanco Family
 Allison Orr & Blake Trabulsi
 Kenneth Owens &
 Lena Brown-Owens
 J. Palaez-Settlemyer &
 M. Settlemyer-Palaez
 Nadine Parmelee
 Grania Patterson
 Veronica Pecero
 Kathleen Penn

Geanine Pirc-Manczko
 & Ted Manczko
 Manuela Powell
 Kelly Pullin
 Melanie Quintana
 John Quirein
 Dana Rachal
 Justin & Katy Rankin
 Brenda Rappaport
 Marianne Reat & Mark Estes
 Sharon Reeves
 Ann Robbins & Steve Buffum
 Max Rohleder & Teri Wood
 David Ross
 Victoria Catherine Rotchford
 Suzelle Roth
 Alissa Saenz
 Vidar & Lieve Saether
 Amy & Kaam Sahely
 Stephen & Paula Sansom
 Jenny & Conan Saunders
 Michele Schwartz &
 Sandy Schwartz
 Barbara Shack
 Irene Shoghi
 Barry & Marcia Silverberg
 Paul Kevin Smith &
 Dino Costa
 Kevin Smothers
 Jo Ann Stehle
 Kimberley Stengel
 Yvana & Tom Stevens

Jamee & Charlie Stewart
 Kristine Sturgeon
 Brittany Sutton
 Cathy Newman Thomas
 Terri T.
 Lea Thompson
 Jennifer & Jean Pierre Trou
 Robin Turner
 Kirsten Tuttle
 Donald Ugent
 Dr. Allison Urrutia
 Lesea Vasilachi
 Tony Villegas
 Melissa & Gary Warren
 Barbara Wensel
 Patrice & Gary Werner
 Patty Wetzel
 Kalli Wild
 James & Karen Wilder
 Glenn Williams
 Thomas Wilson
 Mary Wise &
 Steve Saurenman
 Sabrina Wycoff
 Debbie Zappen
 Diana Zuniga & Victor Woods

MEMBERS \$50+
 Anonymous (2)
 June Alvarez-Fetzer
 Jen Amaral

Heriberto Arambula
 Marzi Asadifar
 Kelsey Bergeson
 Halli Bernal
 Kelli Bosse
 Marili Burbes
 Margaret Burns
 Linda & David Cameron
 Robert Campbell
 Sandra Cardona
 Margaret Caro
 Linda Cartwright
 Susan Clevenger
 Paula Coker
 John & Jennifer Crownover
 Dancewear Specialists
 at Movin Easy
 Christine Davis
 Sally Dewhirst
 Mark Carl Dittman
 The Eathorne Family
 Shantiji Shivaya Ehrlich
 James Epp
 Mary Feng
 Noel Gauny
 Amy Gennrich
 Sarah M. Gresham
 Lisa Harris
 LeeAnn Harverstick
 Tiffany Hayes
 Gerhard Hill

Mary Anne Huckman
 Lauren & Stewart Hunt
 Erin P Johnson
 Rachel Lankford
 Sarah Levithan
 Justin & Irina Litchfield
 Allison Lounsbury
 Charlie & Pat Maples
 Jessica McGlynn
 Lauren M. Mickle
 Tonia Norman
 Stephanie Nun
 Michael Ross Pedlow
 Allison Penna
 Stephen Polkowski
 Liana Putrino
 Margaret Roedel
 Scott Ryder
 Kent Scarbrough
 Jessica Sentz
 Michelle Rae Spaulding
 Jami R. Stell
 Ivy Stowers
 Rie Takahashi
 Susana Tomasetta
 Aaron Torrescano
 Erin Wares
 Mary Whitehurst
 Dr. Jocelyn Asa Wright
 Lei Yang
 Ellen Young

HOW'S YOUR APPETITE FOR ADVENTURE?



Find out for yourself at Maravilla @ The Domain—senior living designed for unique adventures, endless opportunities, and vivid experiences.

Maravilla
 @ THE DOMAIN

11001 Austin Lane, Austin | **737.214.7864** | MaravillaAtTheDomain.com



AN SRG SENIOR LIVING COMMUNITY

PREMIER RETIREMENT LIVING

🏠 📞 📧 📱 FACILITY ID#110291



To provide a legacy for generations to come, Ballet Austin established the Ballet Austin Foundation in 1998 to receive endowment gifts and planned estate giving. This permanent fundraising effort sets in motion a bold vision for our future! Endowment gifts made today create an impact in perpetuity and provide long-term and predictable support. Deferred gifts (commitments to the Legacy Circle) through bequests, beneficiary designations and other charitable gift plans will enrich the lives of future generations. Your support of the Ballet Austin Foundation ensures that we are Here for Good.

ENDOWMENT DONORS

\$6,000,000+

Dr. & Mrs. Ernest C. Butler

Ballet Austin Guild
 Dr. & Mrs. Craig C. Kuglen
 Edie Rogat & Cotter Cunningham
 Dilum & Surangi Chandrasoma
 Jennene & K. Ray* Mashburn
 Peter Schram & Harry Ullman*

\$100,000 +

Anonymous
 In loving memory of Nancy Carpenter
 Ballet Austin Board of Directors
 Janette & Patrick Keating
 Mr. & Mrs.* Joe Long

\$25,000+

In loving memory of Marilyn H. Ferguson
 Steve Adler & Diane T. Land
 Barbara & Alan Cox in memory of James Alan Cox
 Martha & Cliff Ernst
 Jo & Jonathan Ivester
 Catherine Leon-Parker
 Emily Moreland / Moreland Properties
 Cathy & Dwight Thompson

\$50,000+

Anonymous
 In honor of Sarah Butler, 2022 BAF Trustees
 and Advisory Council Members
 In loving memory of Martha B. Harrington
 In loving memory of Terri Lynn Wright

LEGACY CIRCLE MEMBERS

Ballet Austin thanks our Legacy Circle members, donors who graciously remember Ballet Austin in their estate plans.

Steve Adler & Diane T. Land
 Becky Beaver
 Rick Bennett
 Paula & Bob Boldt
 Dr. & Mrs. Ernest Butler
 Darlene & Dan Byrne
 Ann & Jim Downing
 Martha & Cliff Ernst
 Dr. Harvey Evans* & Gloria Evans
 Jennifer Guthrie
 David L. Harrington
 Becky & Richard Herrington
 Nikki Bryant Irion & Terry Irion
 Caroline C. Jones
 Alex Ladage
 Laraine & Leon Kentridge Lasdon
 Mike Baryshnikov Le Burkien

Julie Koenig Laignon
 Catherine Leon-Parker
 Jennene & K. Ray* Mashburn
 Michael Ellwood Owens
 Charles A. Phillips
 Forrest Preece & Linda Ball
 Wanda A. Reynolds
 Cookie & Phil Ruiz
 Eddie Safady
 Jare Smith
 Karen Sonleitner
 Mary Walcutt
 J. Craig Wallace
 Bill & Stephanie Whitehurst

* In memoriam

We would be honored to visit with you about tax strategies which may benefit you and your family as you make your year-end charitable giving plans. Please contact Development Director, Christi Lotz, at christi.lotz@balletaustin.org for more information.

BALLET AUSTIN FOUNDATION BOARD OF TRUSTEES

CHAIR

Cathy Thompson

VICE CHAIR

Emily Moreland

TREASURER

Edie Rogat

SECRETARY

Sarah Butler
Founding Chair Emeritus

LEGACY CIRCLE CHAIR

Cliff Ernst

Sly Majid,
Ex-officio, Ballet Austin President

Tom Welch,
Ex-officio, Ballet Austin Treasurer

Diane T. Land
 Jennene Mashburn

ADVISORY COUNCIL

Michael Blue
 Paula Boldt
 Blaine Bull
 Dorothy Drummer
 Renée Gallagher
 Jennifer Guthrie
 Alex Ladage
 Ryann Reaud
 Stephanie Whitehurst

Derry Swanger,
*Swanger Prickett LLP
 Legal Advisor*

Jon Fellows,
*Fiducient Advisors
 Financial Advisor*



b BALLETAUSTIN
PILATES

2 LOCATIONS:

DOWNTOWN

DELL JEWISH COMMUNITY
CENTER

GET STARTED WITH
AN INTRO OFFER!

BALLETAUSTIN.ORG/PILATES
512.501.8704

b BALLETAUSTIN

DANCE CLASSES FOR ADULTS

GET STARTED WITH A

**\$5 FIRST CLASS
TODAY!**

BALLETAUSTIN.ORG/DANCE-FITNESS
512.501.8704 | DOWNTOWN



BALLET AUSTIN GUILD

Ballet Austin Guild is a volunteer group with a mission to support and promote Ballet Austin in its commitment to excellence in dance through fundraising, community, and education.

Ballet Austin Guild volunteers enjoy a deeper level of connection and involvement with Ballet Austin, making the dream of dance a reality for the wider Austin community.

BALLET AUSTIN GUILD OFFICERS

PRESIDENT

Thea Whalen

PARLIMENTARIAN

Lori Keller

TREASURER

Lori Keller

VICE PRESIDENT OF MEMBER EVENTS

Lorrie Garcia

VICE PRESIDENT OF MERCHANDISING

Suzanne Tomlin

VICE PRESIDENT OF MEMBERSHIP

Araceli Tapia

SECRETARY

Blair Thayer

VICE PRESIDENT OF COMMUNICATIONS

Ann Downing

VICE PRESIDENT OF BALLET AUSTIN SUPPORT

Brooke Howard

JOIN THE GUILD TODAY!

Membership benefits include meetings with fellow Guild members, ticket discounts and the opportunity to interact with company dancers.



SCAN FOR MORE
INFORMATION

ba BALLETAUSTIN
GUILD

Photo by Tony Spielberg



ARTISTIC TEAM

Stephen Mills, *Artistic Director*
Sarah & Ernest Butler Family Fund
 Michelle Martin, *Associate Artistic Director*
 Eugene Alvarez, *Company Manager*
 Christopher Swaim, *Rehearsal Director*
 Alexa Capareda,
Rehearsal Director – Ballet Austin TWO
& Butler Fellowship Program

ADMINISTRATIVE TEAM

Cookie Gregory Ruiz, *C.F.R.E.,*
Executive Director
 Lital Yaacob, *Director of Business*
Analytics & Ticketing
 Billie Bledsoe, *Director of Operations*
 Roshae Richard, *Executive Administrator*
 Maureen Cross, *Associate Director of Ticketing*
 Jane Trembley, *Database Specialist*
 Emily McLaughlin, *Controller*
 Valerie Sadorra, *Facilities Manager*
 Paul Petrosky, *Ticketing Manager*
 Natalie Rosete, *Ticketing Associate &*
Customer Experience Team
 Finda Kollie, *Accounting Associate*

PRODUCTION TEAM*

Bill Sheffield, *Production Director & Stage Manager*
 Steven Myers, *Technical Director*
 Tony Tucci, *Lighting Supervisor*
 Alexey Korygin, *Wardrobe Director*
 Conrad Haden, *Head Carpenter*
 C J Swinburn, *Head Electrician*
 Andrew Ferrucci, *Light Board Operator*
 Valerie Sadorra, *Head Props*
 Justin Schubert, *Head Audio*
 Joan Miller, *Head Wardrobe*
 Jessica Boettger, *Stitcher*
 Bon Davis, *Head Projectionist*
 James Cameron, *Assistant Carpenter*
 Doug Pollard, *Assistant Carpenter*
 Antony Celenza, *Props Assistant*
 Rachel Magee, *Props Assistant*
 Cate Nance, *Props Assistant*
 David Gomez, *Head Flyman*
 Charlie King, *Audio Assistant*
 Miriam Jurgensen, *Ballet Austin TWO*
Head of Wardrobe
 Brad Wilson, *Associate Production Manager*
 Tamara Klindt, *Assistant Stage Manager*

BALLET AUSTIN ACADEMY

William Piner, *Academy Director*
 Michelle Martin, *Faculty Chair*
 Jennifer Hart, *Curriculum Manager*
 Katelyn Rustagi, *Senior Programs Manager*
 LB Flett, *Young Children's Program Manager*
 Siobhan O'Donnell, *Registrar*
 Jessica O'Brien, *Academy Administrator*
 Morgan Langford, *Academy Associate*
 Hannah Neuhauser, *Academy Associate*
 Amy Stelly, *Academy Associate*
 Kia Whitaker, *Academy Associate*
 Rob Greenfield, *Pianist Manager*

EDUCATION TEAM

Pei-San Brown, *Director of Education*
 Kathleen Rockefeller, *Associate*
Director of Education
 Sam Rosas-Mantilla, *Education Assistant*
 Rebecca Tulis, *EduMoves™ Teaching Artist*
 McKenzie Chen, *EduMoves™ Teaching Artist*
 NaKia Whitaker, *EduMoves™ Teaching Artist*

CREATIVE SERVICES TEAM

Paul Michael Bloodgood, *Associate*
Director, Film & Video Production
 Anne Marie Bloodgood, *Senior Manager,*
Digital & Social Media / Chief Photographer
 Sarah Pace, *Marketing and*
Communications Manager
 Rachel Pérez, *Graphic & Visual Design Manager*
 Jazz Collins, *Video Content Creator*
 David Schuler, *Web Content Manager*

DEVELOPMENT TEAM

Christi Cuellar Lotz, *C.F.R.E.,*
Development Director
 Brooke Holmes, *Associate Director,*
Individual Giving
 Maria Murphy-Mayberry, *Senior*
Development Manager
 Miranda Cave, *Grants &*
Institutional Giving Associate
 Claire Coker, *Development Administrator*

BUTLER CENTER FOR DANCE & FITNESS

Vicki Parsons, *Director of the Butler Center for*
Dance & Fitness & Pilates Center
 Vlada Sheber, *Pilates Program Director*
 Lauren Parra-Faudree, *Associate Director*
of the Butler Center for Dance & Fitness
 Allyson Kelley, *Community Programs*
Coordinator
 Rajiv Awasthi, *Customer Experience Team*
 Aidan Abraham, *Customer Experience Team*
 Katie Qin, *Customer Experience Team*
 Destiny Nicole, *Customer Experience Team*
 Mariya Raleigh, *Customer Experience Team*
 Alexandra Richmond,
Customer Experience Team
 Mary Riley, *Customer Experience Team*
 Sophie Vaught, *Customer Experience Team*

ACADEMY & BUTLER CENTER INSTRUCTORS

Venese Alcantar, Jenny Alperin,
 Leah Baxter, Ian J. Bethany,
 Pei-San Brown, Daniel Broxton,
 Colin Canavan, Alexa Capareda,
 Sophie Chkaiban, Danielle Cortier,
 Aisling DiRico, Lisa del Rosario,
 Katherine Deutch, Lexi Eicher,
 Taylorann Evans, Lauren Parra Faudree,
 Laura Beth "LB" Flett, James Fuller,
 Kaelie Geiser, Emmalie George,
 Jennifer Hart, Heather Haycock,
 Stacey Huston, Vivian Kaw, Heilla Lain,
 Fay Leonard, Jean Claude Lessou,
 Emily Lofton, Arletta Howard Logan,
 Brenda Susanto Madsen, Kerin Martinez,
 Emily McLaughlin, Mia Moi,
 Jessica O'Brien, Cicily Oliver,
 Sahel Flora Pascual, Elise Pekarek,
 Selena Offenberg, Priscilla Pope,
 Rohit Ramachandran, Marissa Ramirez,
 Lucy Record, Jason Rhodes,
 KC Shonk, Megan Richard,
 Sam Rosas-Mantilla, Katelyn Rustagi,
 Alison Spell, Jadelyn Stanfill,
 Morgan Stillman, Christopher Swaim,
 Dereke Thompson, Jenny Trejo,
 Rebecca Tulis, Ramsay Wall, Juliet Wallace

ACCOMPANISTS

Rob Greenfield, *Pianist Manager*
 Mike Brown, Chip Dolan, Shawn Ellison,
 Rob Greenfield, Anna Harbuck,
 Lan-Thach Kratzke, Kelsey Nelson,
 Stevie Sparks, Peter Stopschinski,
 Ben Tibbetts, David Webb

* Stage employees of Ballet Austin are represented by I.A.T.S.E. Local 205.



“We are proud to be named the best.
And we are already searching for better.”

Torstein Hagen, Chairman



Onwards.



Visit [viking.com](https://www.viking.com), call 1-800-2-Viking
or see your Travel Advisor

Ship category: Mid-size ship 300–799 cabins and small ship 150–299 cabins. ©2023. *Travel + Leisure*® is a registered trademark of *Travel + Leisure* Holdco, LLC, a subsidiary of Wyndham Destinations, Inc. *Travel + Leisure*® World's Best Awards is used under license. *Travel + Leisure*® is published by TI Inc. Affluent Media Group, a Dotdash Meredith company, which is not affiliated with Wyndham Destinations, Inc. or its subsidiaries. All rights reserved; used under license. CST# 2052644-40

